

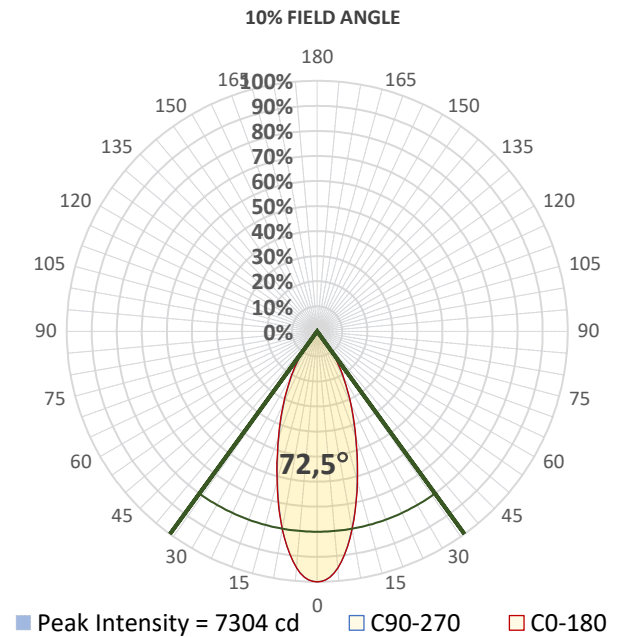
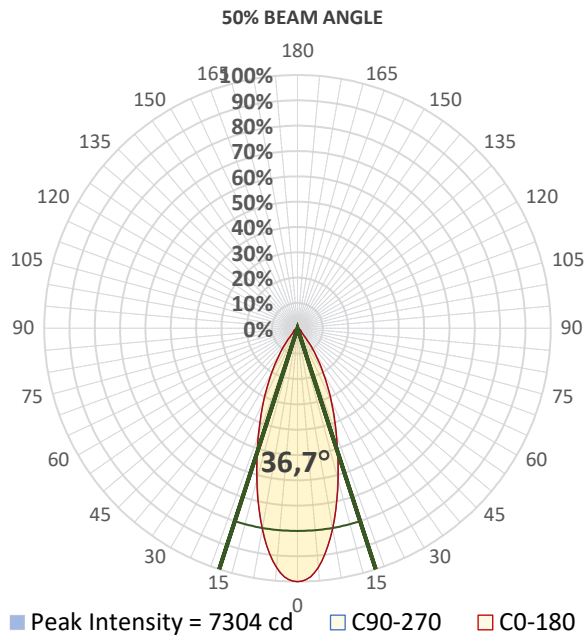
## Report Summary



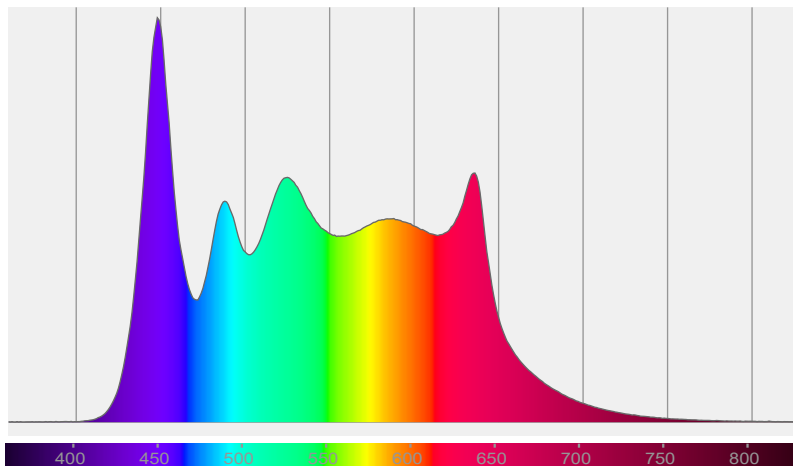
## Measurements

Photometrical Parameter	Optical Parameters	Electrical Parameters
Fixture Output: 3842 lm / 7307 cd	Beam Angle (50%): 36,7°	AC Supply: 225 V / 50 Hz
Fixture Efficiency: 39 lm/W	Field Angle (10%): 72,5°	Power: 97,9 W
Intensity @ 5m: 292 lx	Cutoff Angle (2,5%): 90,3°	Current: 0,507 A
Color Temperature: 5745 K		Power Factor: 0,86
CRI: 96,9		
CRI R9 Value: 80,8		
CQS: 95,6		
TLCI: 95		
TM-30 Rf: 94,3		
TM-30 Rg: 101,2		

## Details



## Spectral Distribution



CIE 1931

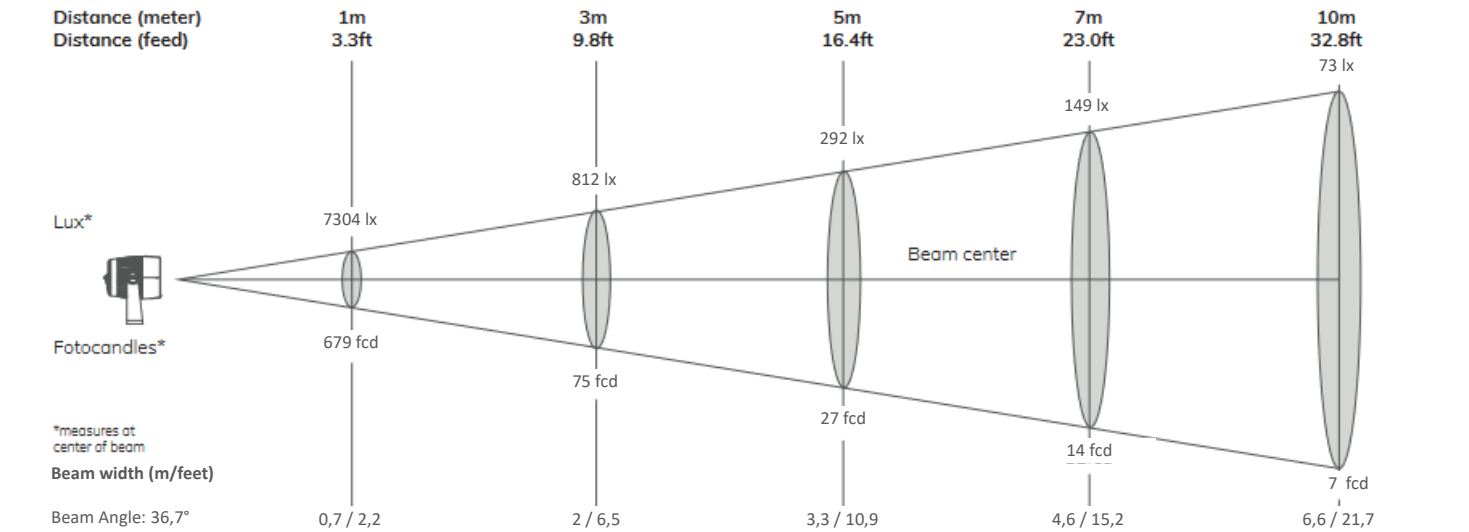
x: 0,327 y: 0,340

Light Quality

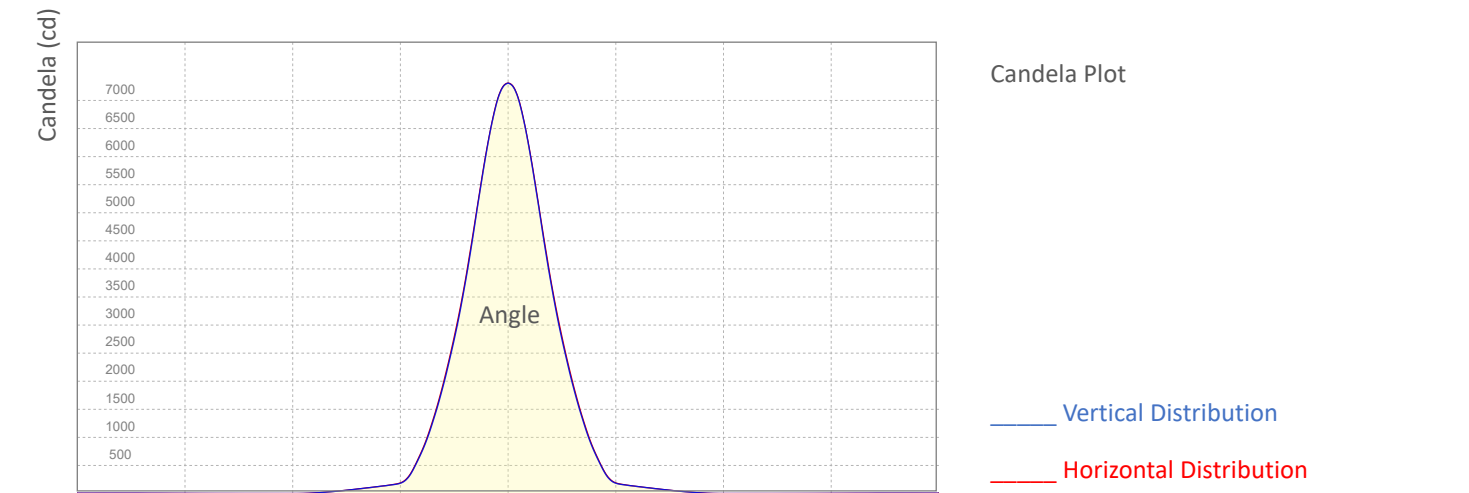
CRI: 96,9

Color Temperature

5745 K

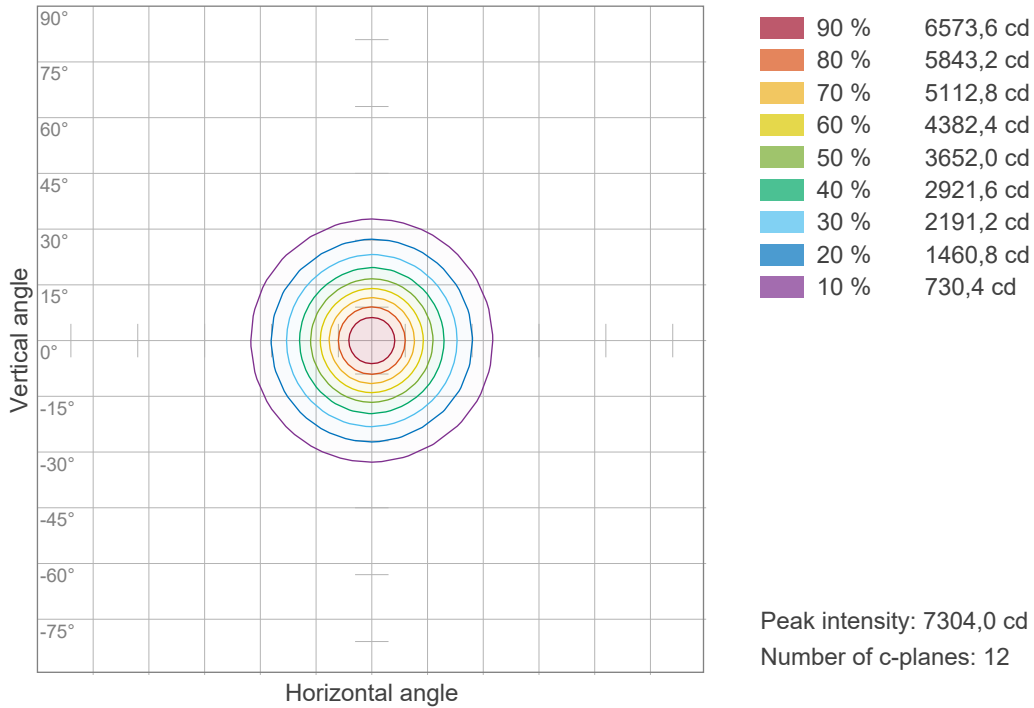


Angle	Distance									
	1m / 3.3ft		3m / 9.8ft		5m / 16.4ft		7m / 23ft		10m / 32.8ft	
	Lux Center lx/fcd	Diameter m/feet	Lux Center lx/fcd	Diameter m/feet	Lux Center lx/fcd	Diameter m/feet	Lux Center lx/fcd	Diameter m/feet	Lux Center lx/fcd	Diameter m/feet
Beam Angle: 36,7°	7304/ 679	0,7/2,2	812/ 75	2/6,5	292/ 27	3,3/10,9	149/ 14	4,6/15,2	73/ 7	6,6/21,7

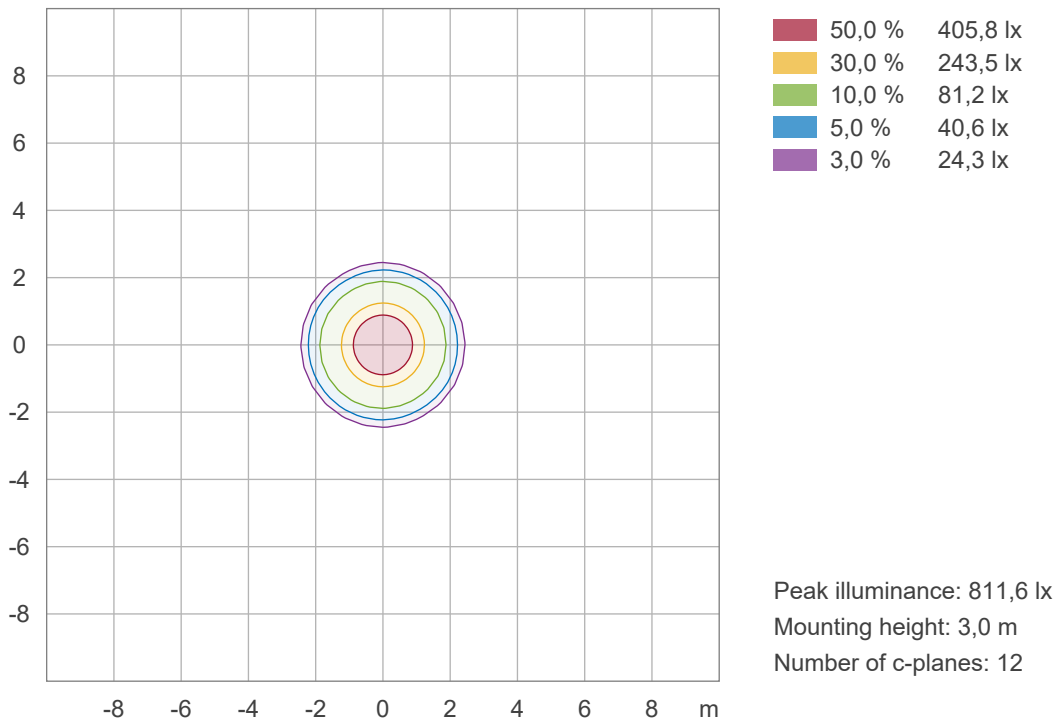


## ISO Diagrams

ISO Candela Diagram

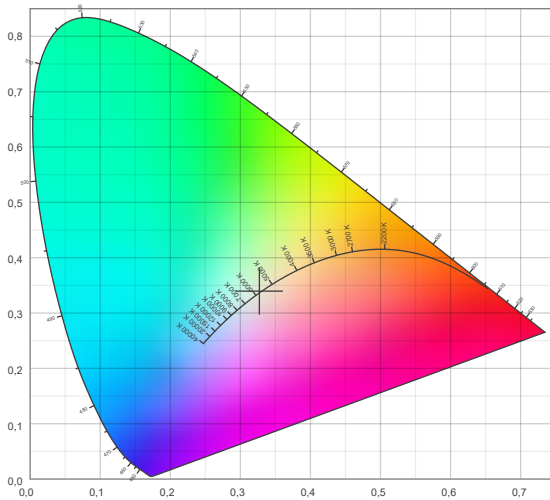


ISO Lux Diagram

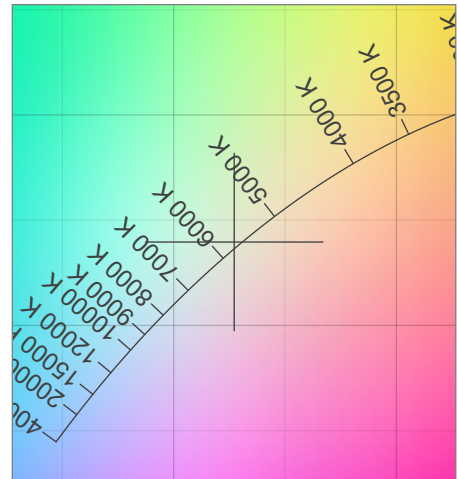


## Chromaticity

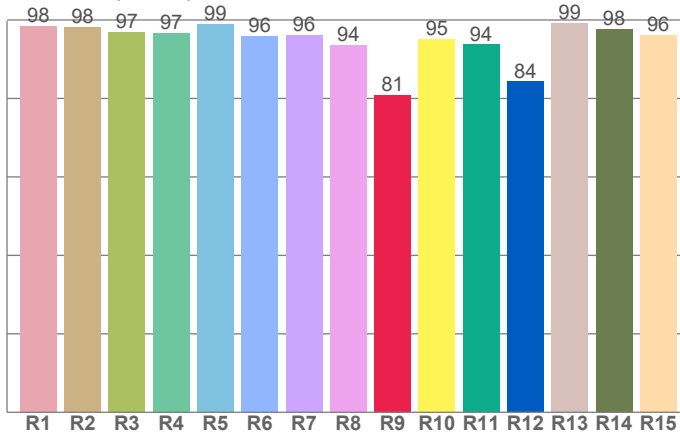
CIE 1931



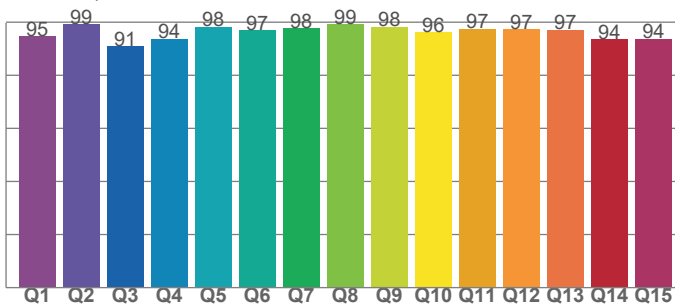
CIE 1931 - Zoom



CRI: 96,9 (R1-R8)



CQS: 95,6



Color Temperature	Color Coordinate CIE 1931	Color Coordinate CIE 1931
CCT	x	y
5745K	0,327	0,340

Color Deviation Black Body Curve	Color Coordinate CIE 1964	Color Coordinate CIE 1964
$\Delta uv$	u	v
0,0016	0,204	0,317

Color Rendering Index	Red Component	Color Quality Scale
CRI	CRI – R9	CQS
96,9	80,8	95,6

Television Lighting Consistency Index	Color Fidelity	Color Gamut
TLCI	TM30 – Rf	TM30 - Rg
95	94,3	101,2

TM30 Details

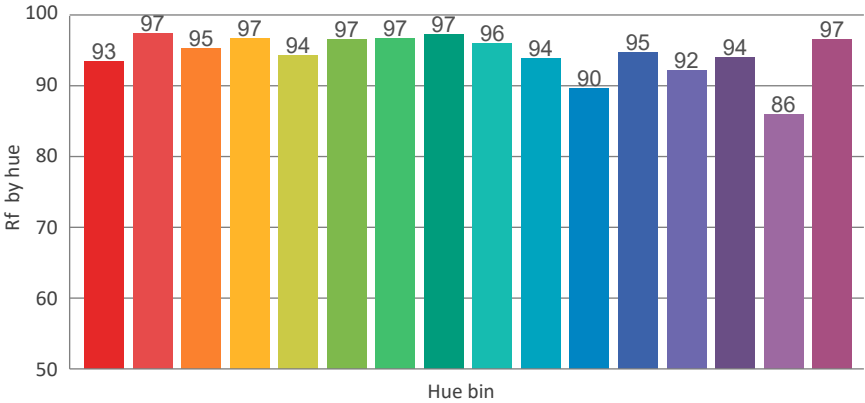
Rf 94,3

Fidelity Index Rf

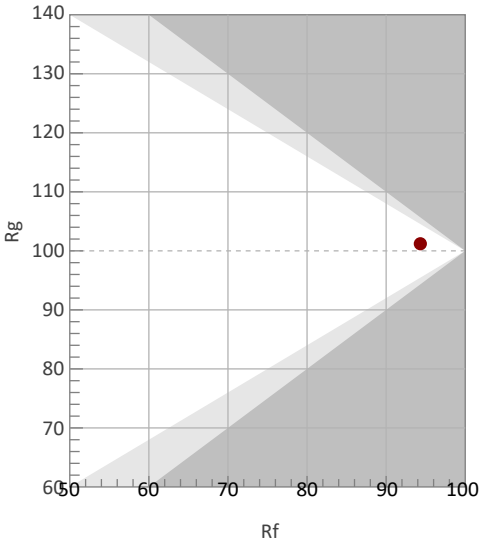
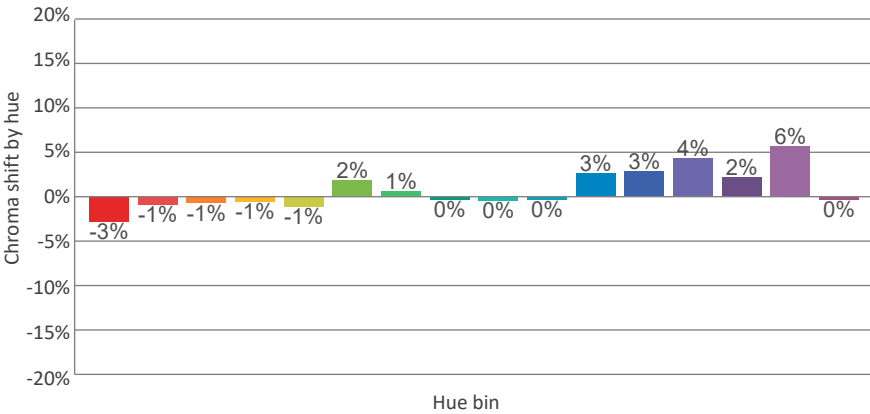
Rg 101,2

Gamut Index Rg

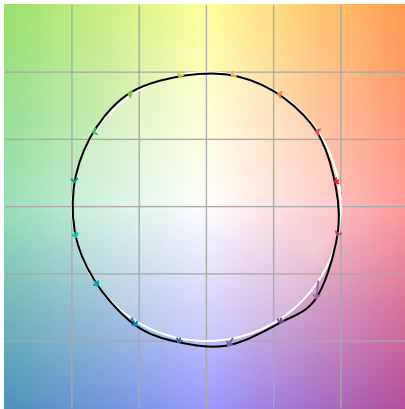
		Shifts (%)	
Hue Bin	Rf	Chroma	Hue
1		%	%
2		%	%
3		%	%
4		%	%
5		%	%
6		%	%
7		%	%
8		%	%
9		%	%
10		%	%
11		%	%
12		%	%
13		%	%
14		%	%
15		%	%
16		%	%



TM30\_BIN\_VALUES\_END)



Color Vector Graphics



Color Distortion Graphics



Color Evaluation Sample

