

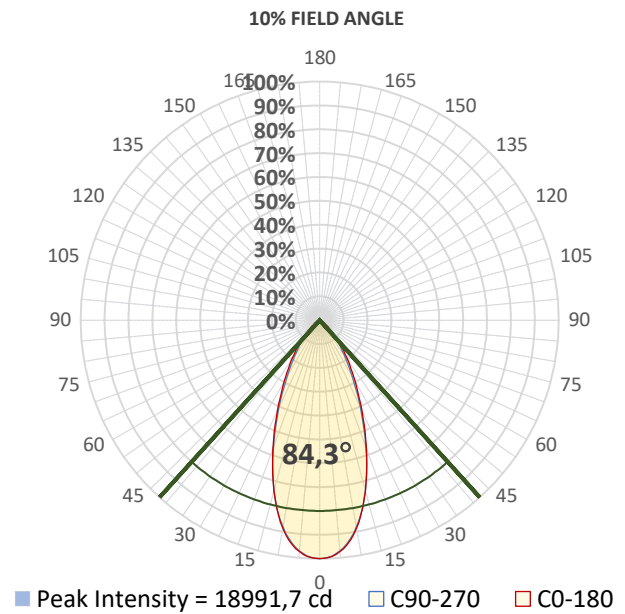
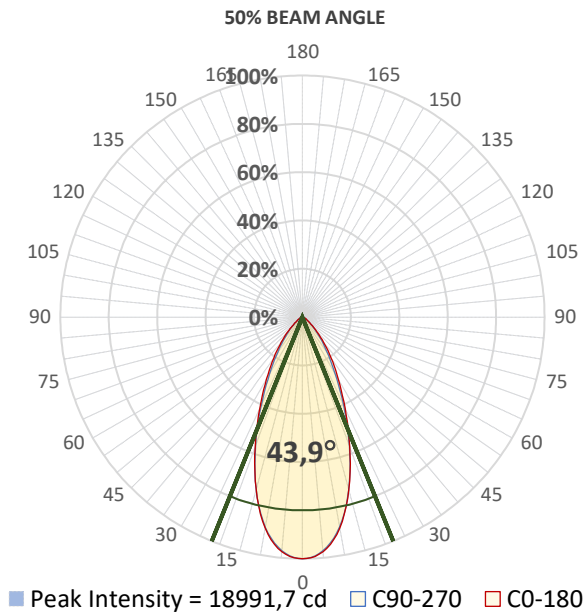
## Report Summary



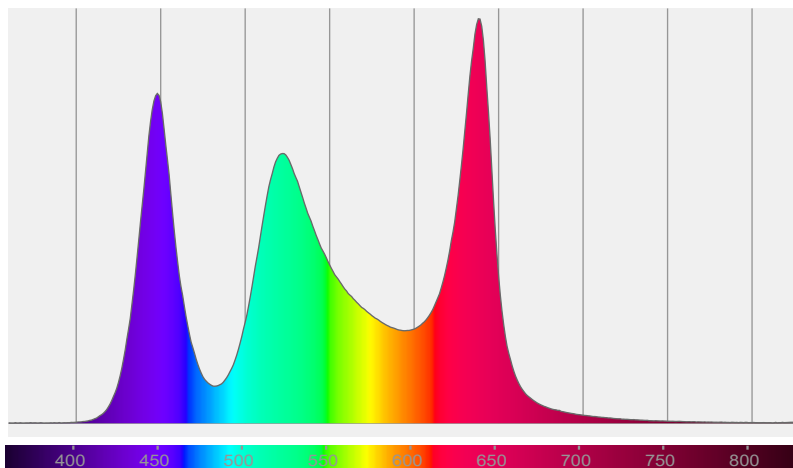
## Measurements

Photometrical Parameter	Optical Parameters	Electrical Parameters
Fixture Output: 13378 lm / 19016 cd	Beam Angle (50%): 43,9°	AC Supply: 225 V / 50 Hz
Fixture Efficiency: 34 lm/W	Field Angle (10%): 84,3°	Power: 392 W
Intensity @ 5m: 760 lx	Cutoff Angle (2,5%): 111,2°	Current: 1,81 A
Color Temperature: 5802 K		Power Factor: 0,96
CRI: 74,8		
CRI R9 Value: -17,4		
CQS: 85,4		
TLCI: 62		
TM-30 Rf: 81,4		
TM-30 Rg: 115,4		

## Details



## Spectral Distribution



CIE 1931

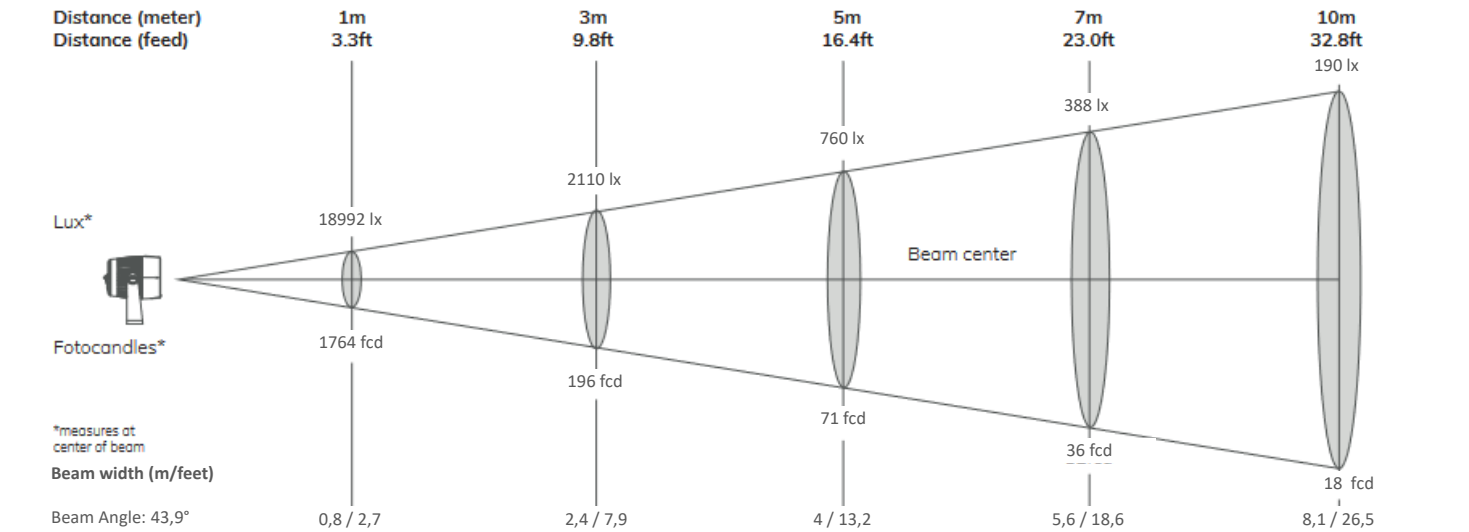
x: 0,326 y: 0,343

Light Quality

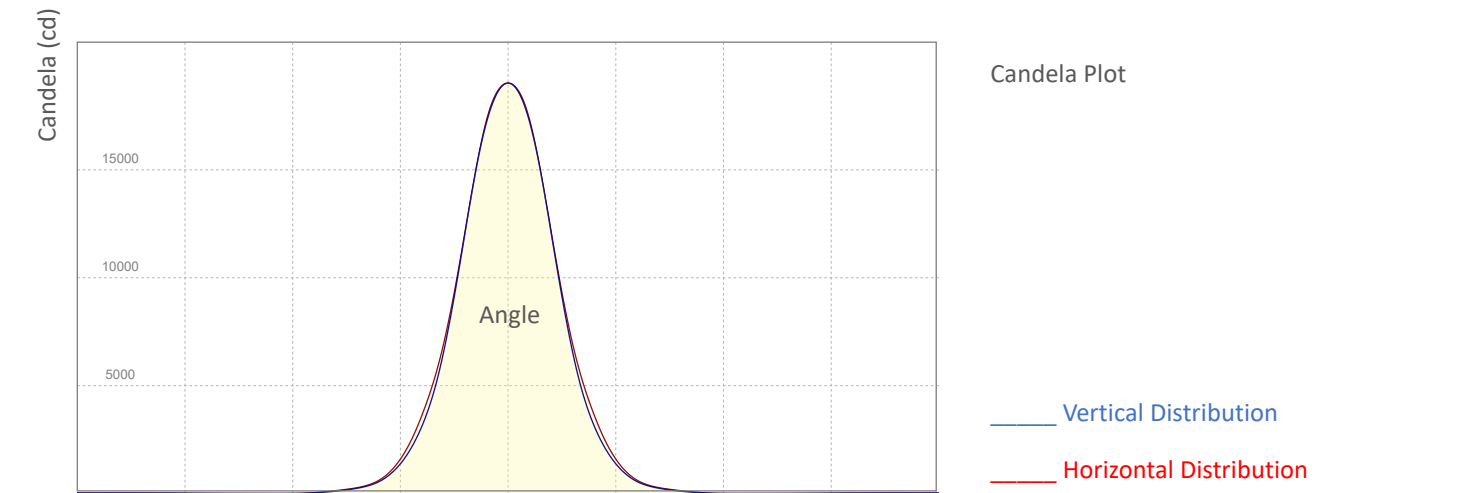
CRI: 74,8

Color Temperature

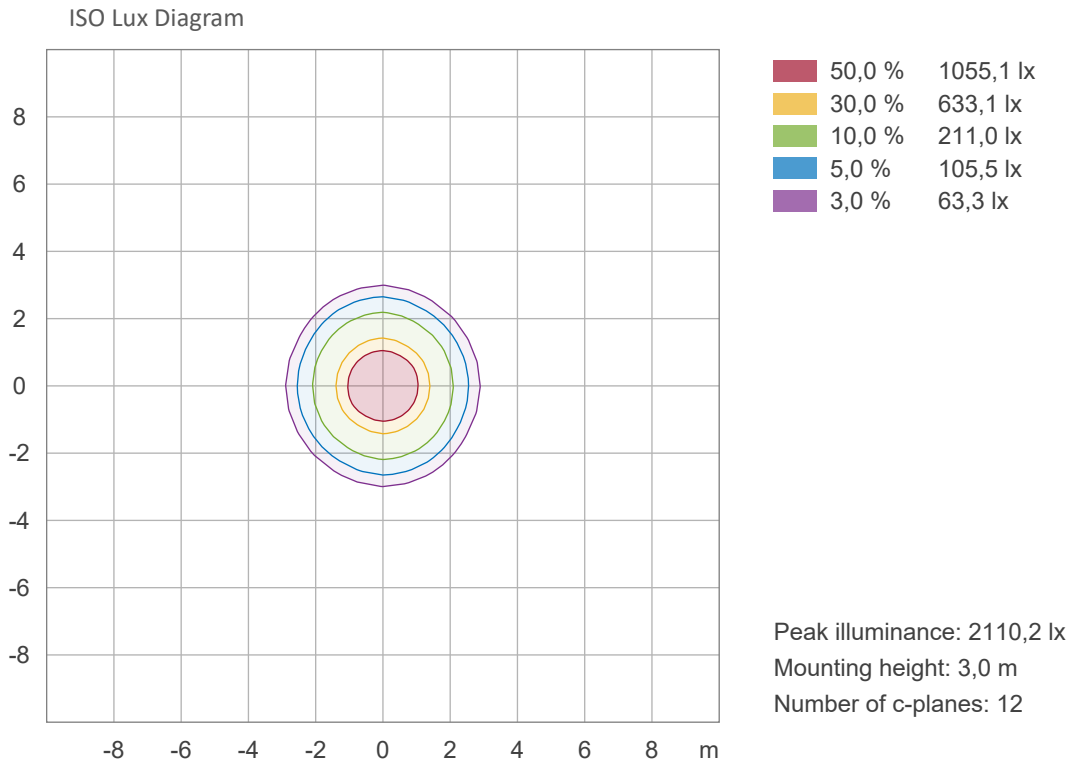
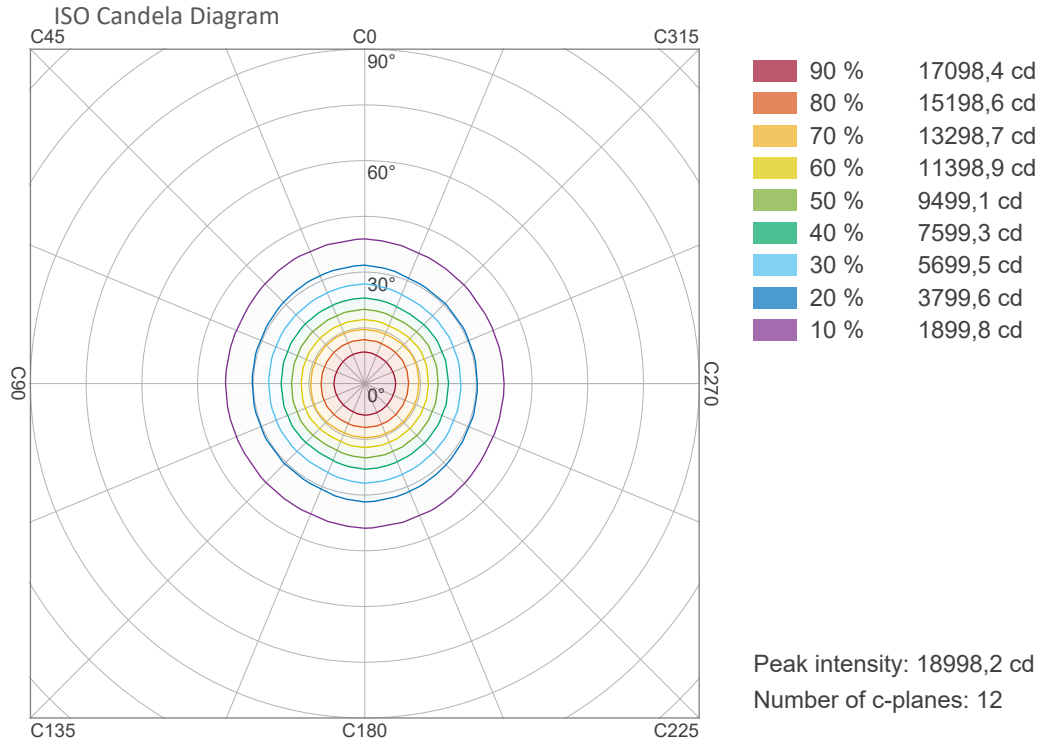
5802 K



Angle	Distance									
	1m / 3.3ft		3m / 9.8ft		5m / 16.4ft		7m / 23ft		10m / 32.8ft	
	Lux Center lx/fcd	Diameter m/feet	Lux Center lx/fcd	Diameter m/feet	Lux Center lx/fcd	Diameter m/feet	Lux Center lx/fcd	Diameter m/feet	Lux Center lx/fcd	Diameter m/feet
Beam Angle: 43,9°	18992/ 1764	0,8/2,7	2110/ 196	2,4/7,9	760/ 71	4/13,2	388/ 36	5,6/18,6	190/ 18	8,1/26,5

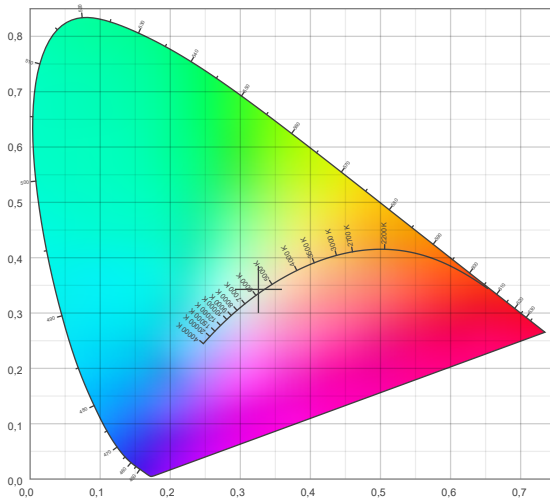


## ISO Diagrams

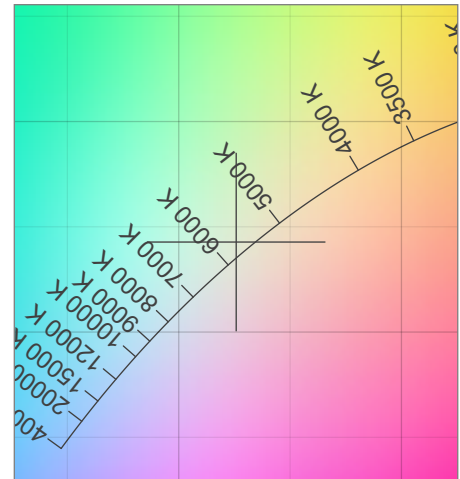


## Chromaticity

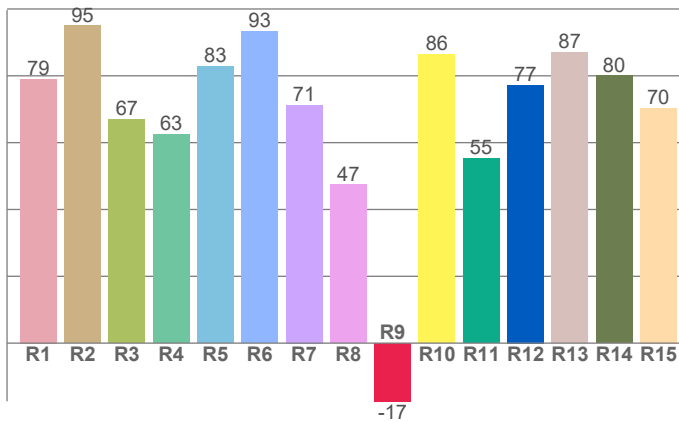
CIE 1931



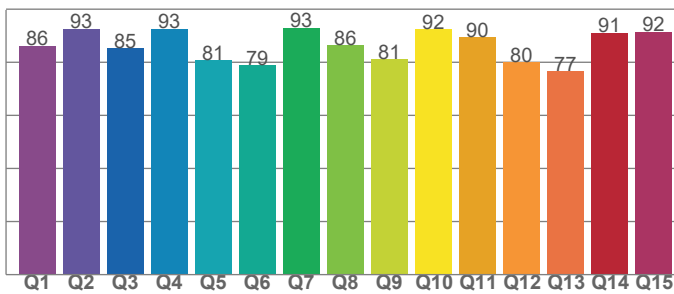
CIE 1931 - Zoom



CRI: 74,8 (R1-R8)



CQS: 85,4



Color Temperature	Color Coordinate CIE 1931	Color Coordinate CIE 1931
CCT	x	y
5802K	0,326	0,343

Color Deviation Black Body Curve	Color Coordinate CIE 1964	Color Coordinate CIE 1964
$\Delta uv$	u	v
0,0039	0,202	0,318

Color Rendering Index	Red Component	Color Quality Scale
CRI	CRI – R9	CQS
74,8	-17,4	85,4

Television Lighting Consistency Index	Color Fidelity	Color Gamut
TLCI	TM30 – Rf	TM30 - Rg
62	81,4	115,4

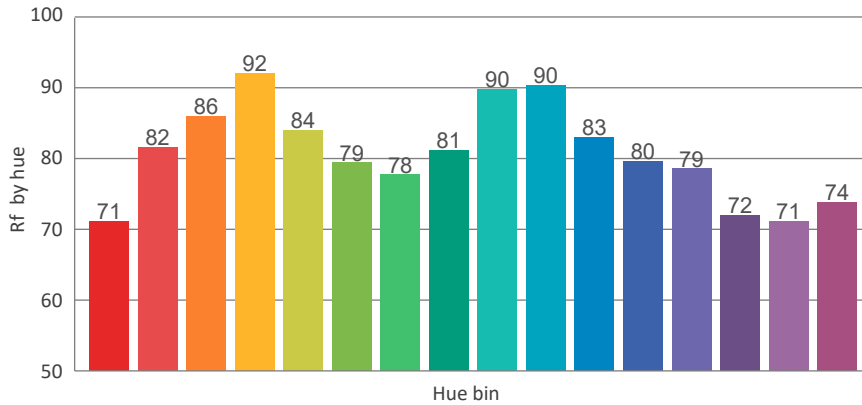
## TM30 Details

**Rf 81,4**

Fidelity Index Rf

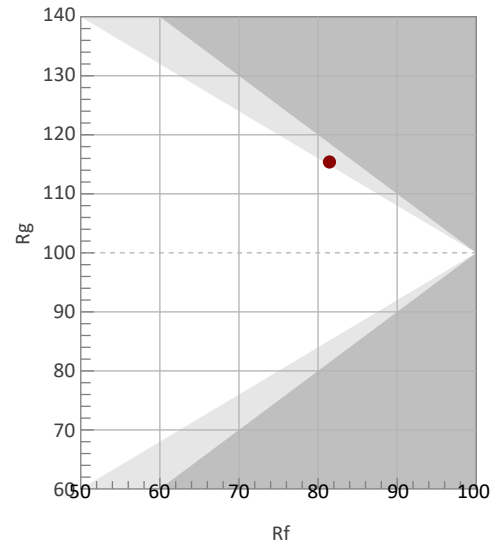
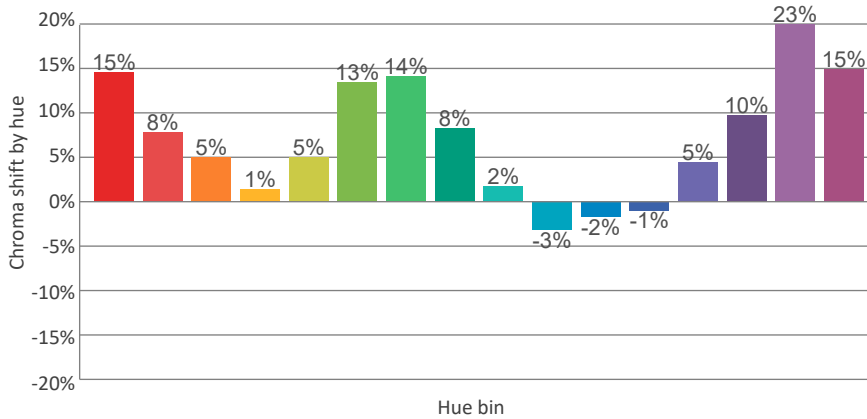
**Rg 115,4**

Gamut Index Rg

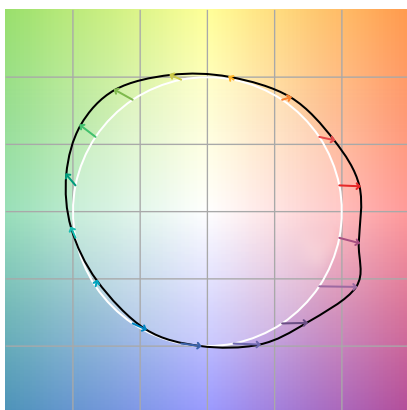


		Shifts (%)	
Hue Bin	Rf	Chroma	Hue
1		%	%
2		%	%
3		%	%
4		%	%
5		%	%
6		%	%
7		%	%
8		%	%
9		%	%
10		%	%
11		%	%
12		%	%
13		%	%
14		%	%
15		%	%
16		%	%

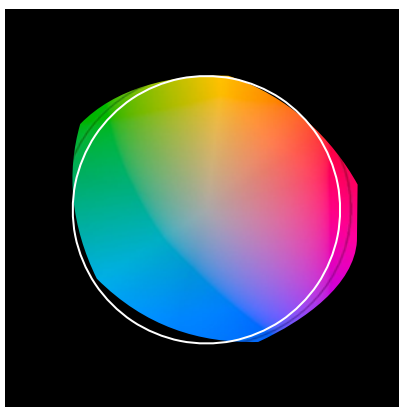
TM30\_BIN\_VALUES\_END)



Color Vector Graphics



Color Distortion Graphics



Color Evaluation Sample

