

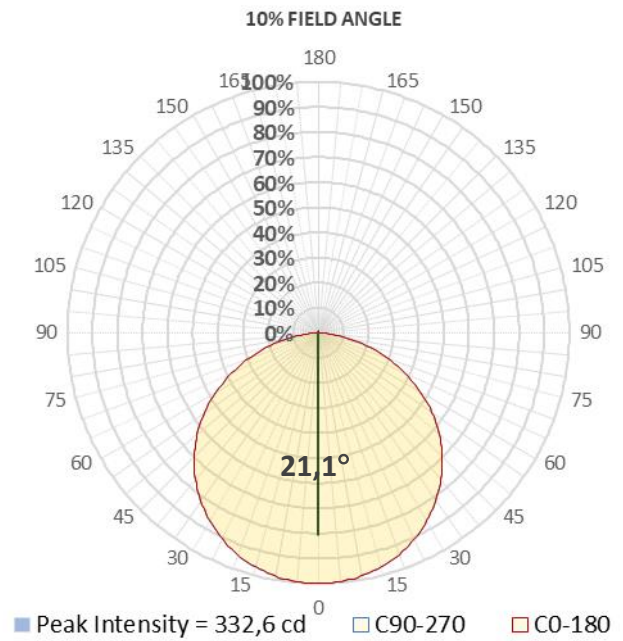
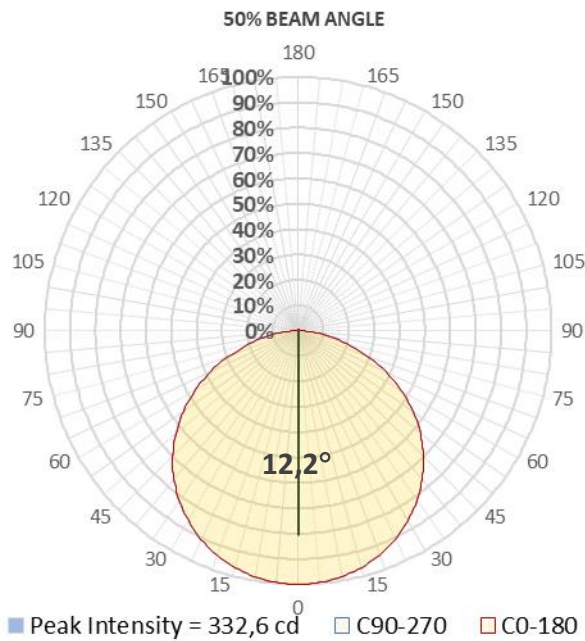
Report Summary



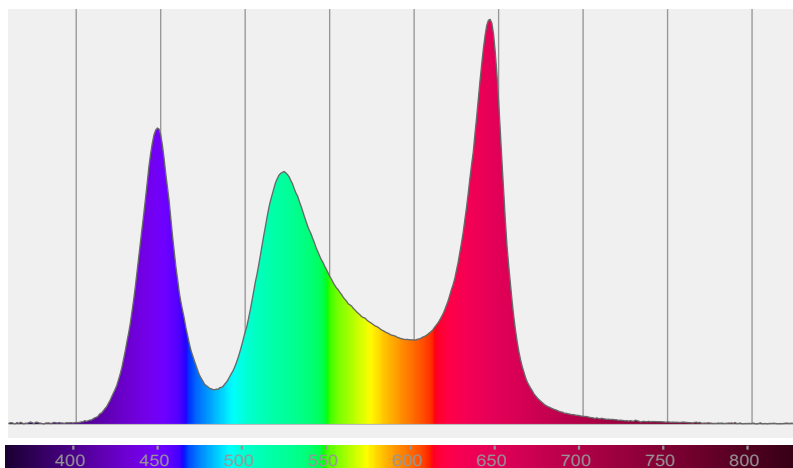
Measurements

Photometrical Parameter	Optical Parameters	Electrical Parameters
Fixture Output: 20694 lm / 387170 cd	Beam Angle (50%): 12,2°	AC Supply: 224 V / 50 Hz
Fixture Efficiency: 37 lm/W	Field Angle (10%): 21,1°	Power: 561,9 W
Intensity @ 5m: 14228 lx	Cutoff Angle (2,5%): 30,7°	Current: 2,56 A
Color Temperature: 5830 K		Power Factor: 0,98
CRI: 73,1		
CRI R9 Value: -31,5		
CQS: 84,6		
TLCI: 57		
TM-30 Rf: 79,9		
TM-30 Rg: 115,5		

Details



Spectral Distribution



CIE 1931

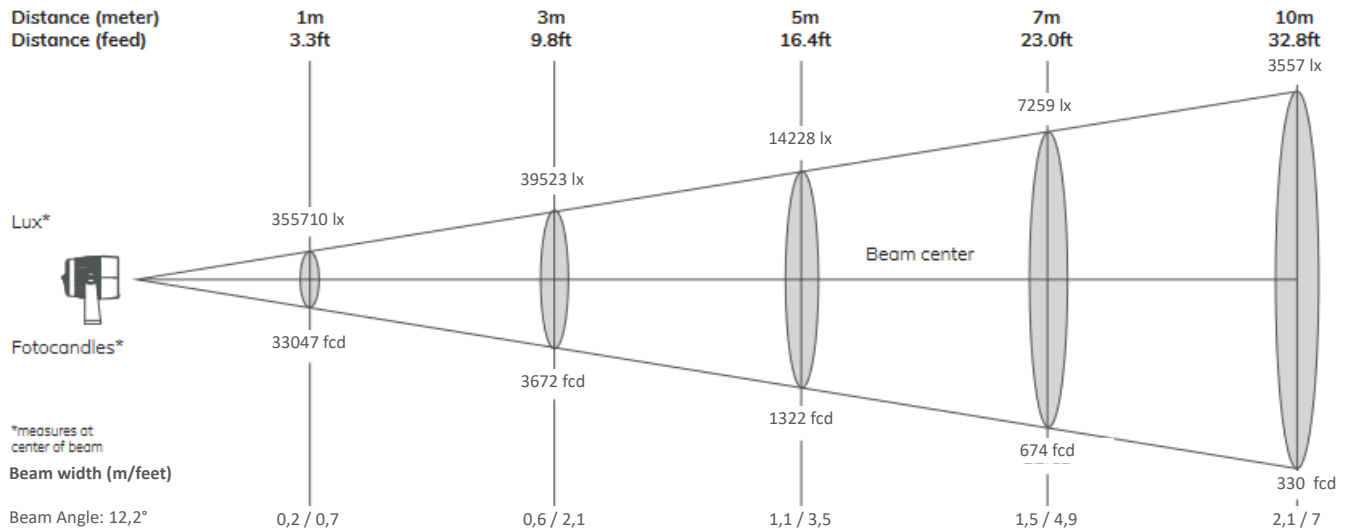
x: 0,325 y: 0,346

Light Quality

CRI: 73,1

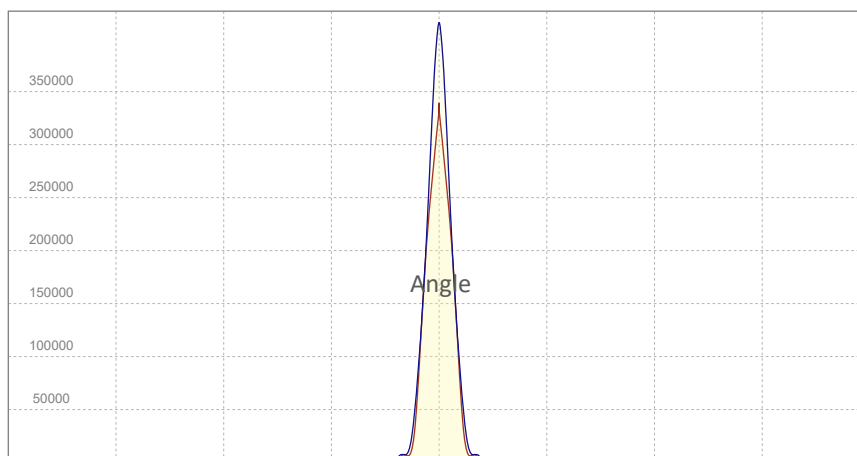
Color Temperature

5830 K



Angle	Distance									
	1m / 3.3ft		3m / 9.8ft		5m / 16.4ft		7m / 23ft		10m / 32.8ft	
	Lux Center lx/fcd	Diameter m/feet	Lux Center lx/fcd	Diameter m/feet	Lux Center lx/fcd	Diameter m/feet	Lux Center lx/fcd	Diameter m/feet	Lux Center lx/fcd	Diameter m/feet
Beam Angle: 12,2°	355710/ 33047	0,2/0,7	39523/ 3672	0,6/2,1	14228/ 1322	1,1/3,5	7259/ 674	1,5/4,9	3557/ 330	2,1/7

Candela (cd)

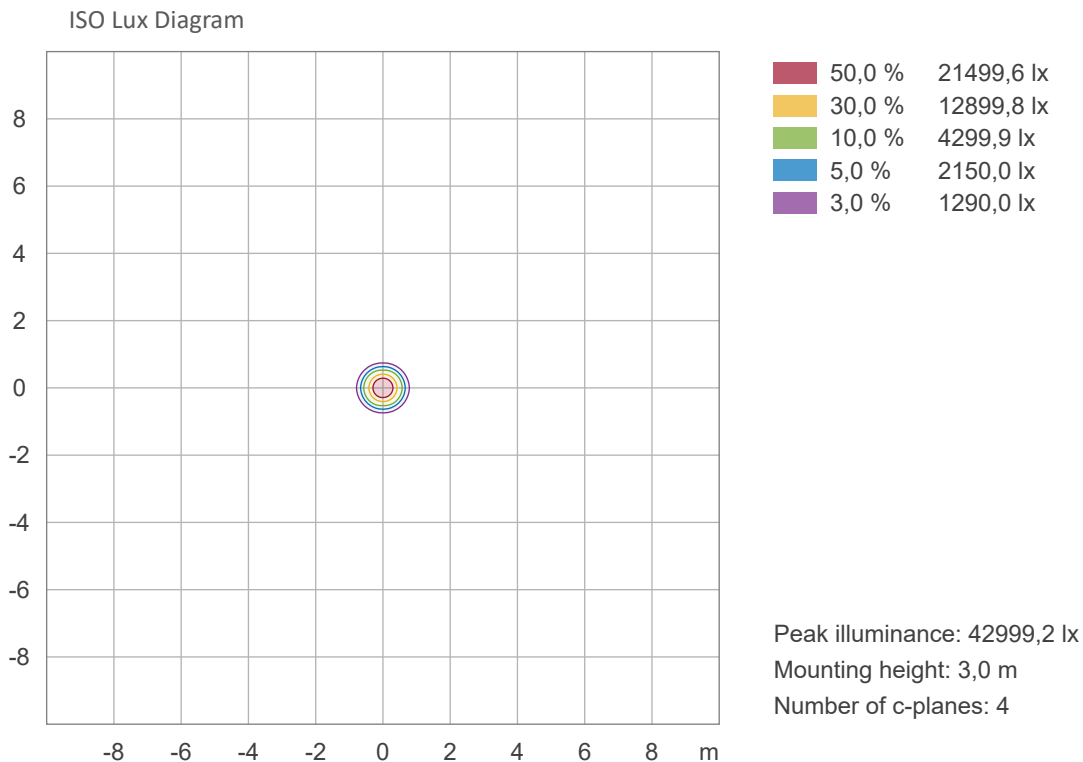
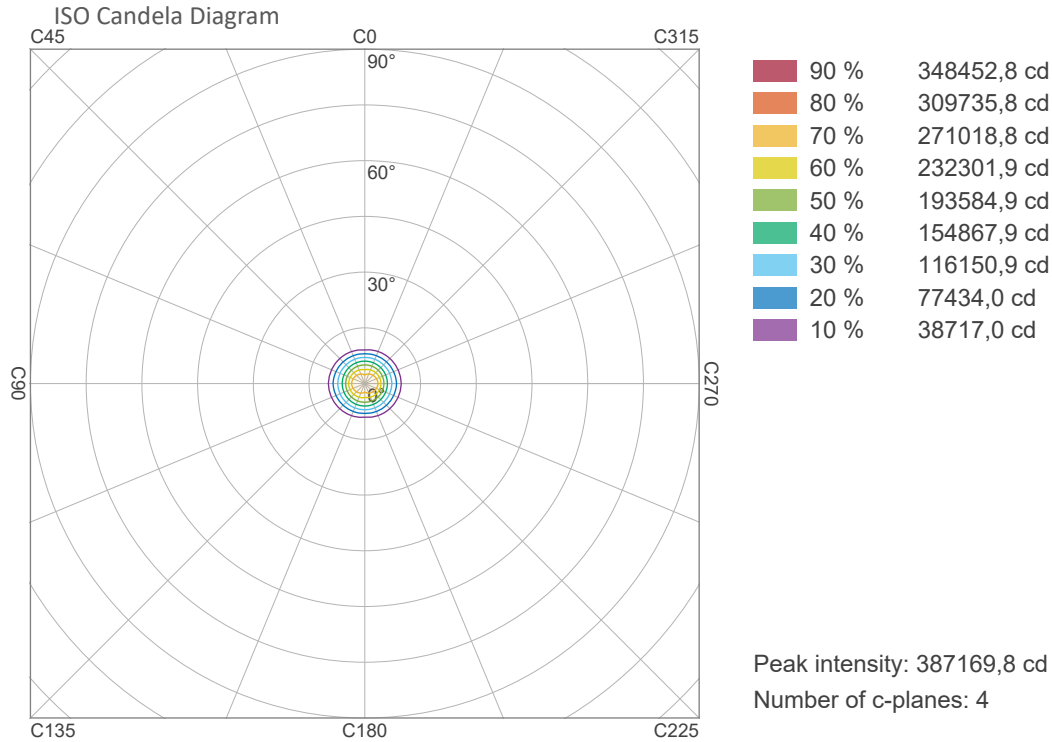


Candela Plot

Vertical Distribution

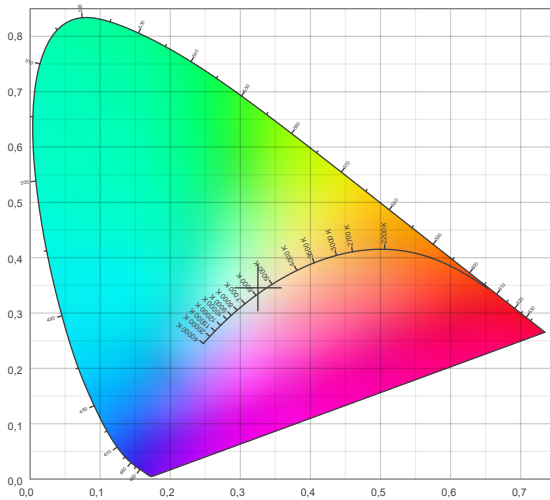
Horizontal Distribution

ISO Diagrams

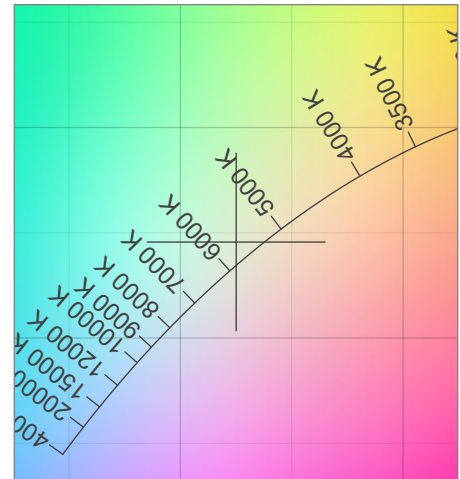


Chromaticity

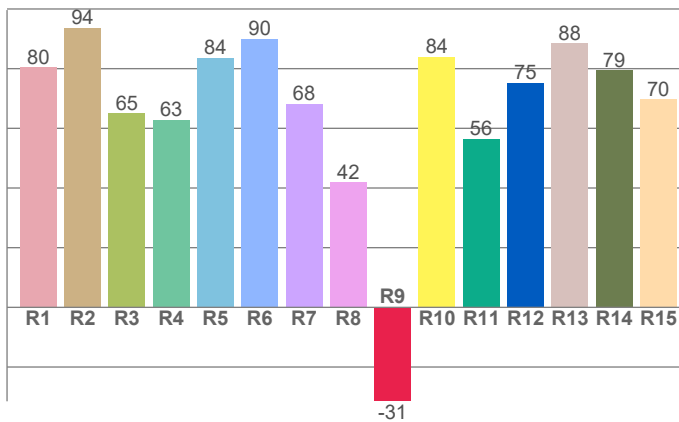
CIE 1931



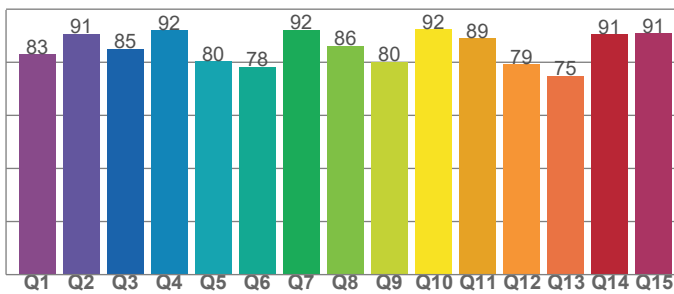
CIE 1931 - Zoom



CRI: 73,1 (R1-R8)



CQS: 84,6



Color Temperature	Color Coordinate CIE 1931	Color Coordinate CIE 1931
CCT	x	y
5830K	0,325	0,346

Color Deviation Black Body Curve	Color Coordinate CIE 1964	Color Coordinate CIE 1964
Δuv	u	v
0,0024	0,200	0,319

Color Rendering Index	Red Component	Color Quality Scale
CRI	CRI – R9	CQS
73,1	-31,5	84,6

Television Lighting Consistency Index	Color Fidelity	Color Gamut
TLCI	TM30 – Rf	TM30 - Rg
57	79,9	115,5

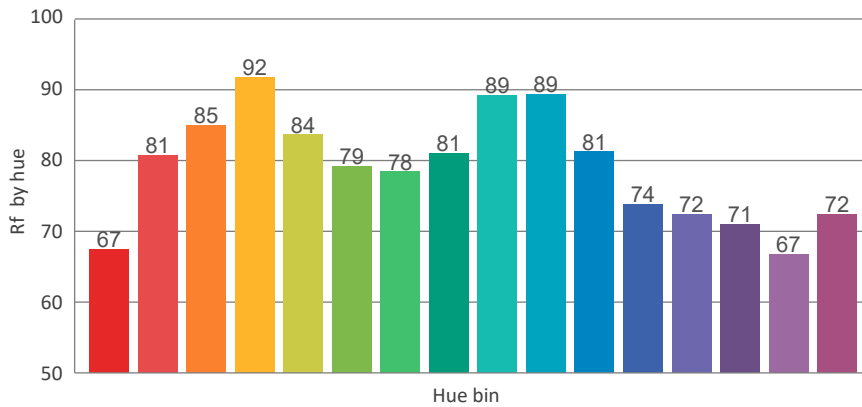
TM30 Details

Rf 79,9

Fidelity Index Rf

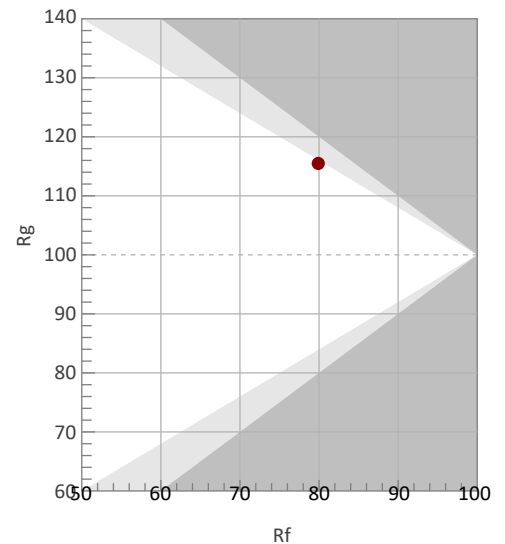
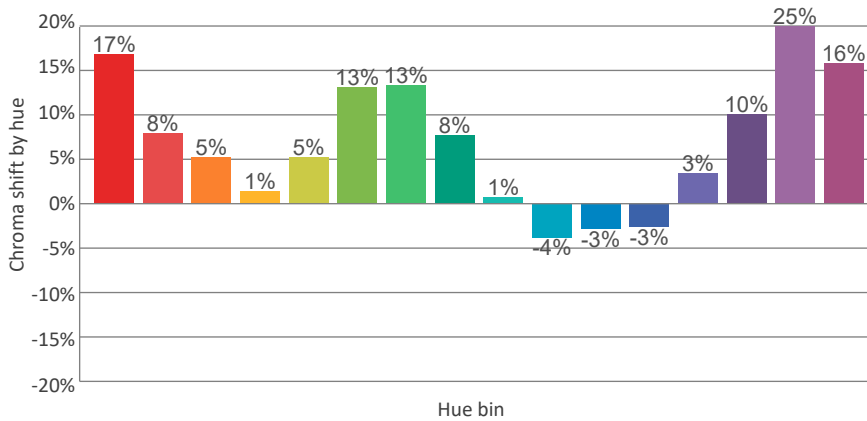
Rg 115,5

Gamut Index Rg

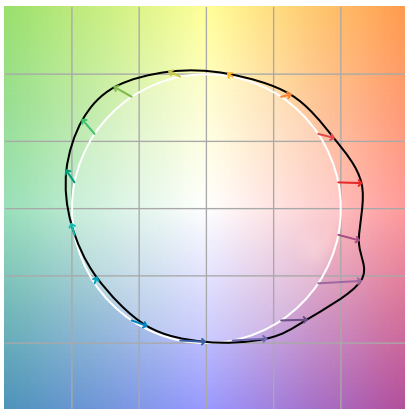


		Shifts (%)	
Hue Bin	Rf	Chroma	Hue
1		%	%
2		%	%
3		%	%
4		%	%
5		%	%
6		%	%
7		%	%
8		%	%
9		%	%
10		%	%
11		%	%
12		%	%
13		%	%
14		%	%
15		%	%
16		%	%

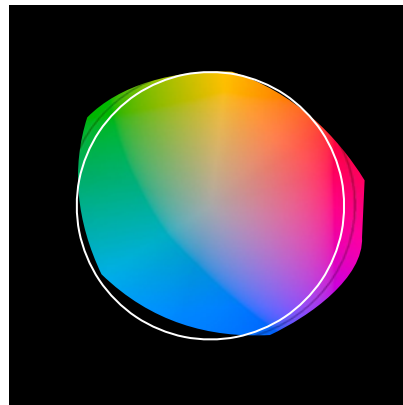
TM30_BIN_VALUES_END)



Color Vector Graphics



Color Distortion Graphics



Color Evaluation Sample

