

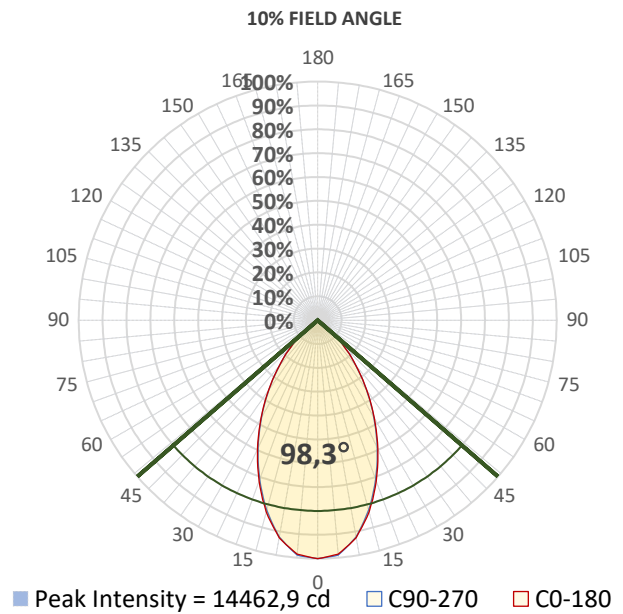
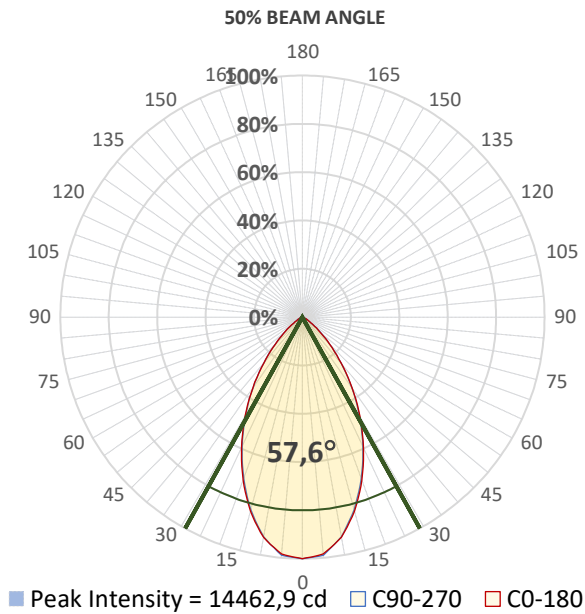
Report Summary



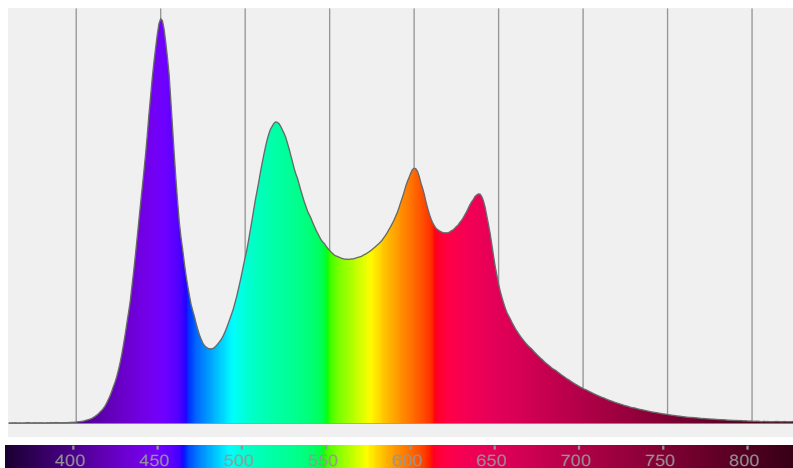
Measurements

Photometrical Parameter	Optical Parameters	Electrical Parameters
Fixture Output: 14548 lm / 14556 cd	Beam Angle (50%): 57,6°	AC Supply: 226 V / 50 Hz
Fixture Efficiency: 34 lm/W	Field Angle (10%): 98,3°	Power: 429,8 W
Intensity @ 5m: 579 lx	Cutoff Angle (2,5%): 119°	Current: 2,00 A
Color Temperature: 5496 K		Power Factor: 0,95
CRI: 92,8		
CRI R9 Value: 87,2		
CQS: 93,8		
TLCI: 83		
TM-30 Rf: 91,5		
TM-30 Rg: 106,6		

Details



Spectral Distribution



CIE 1931

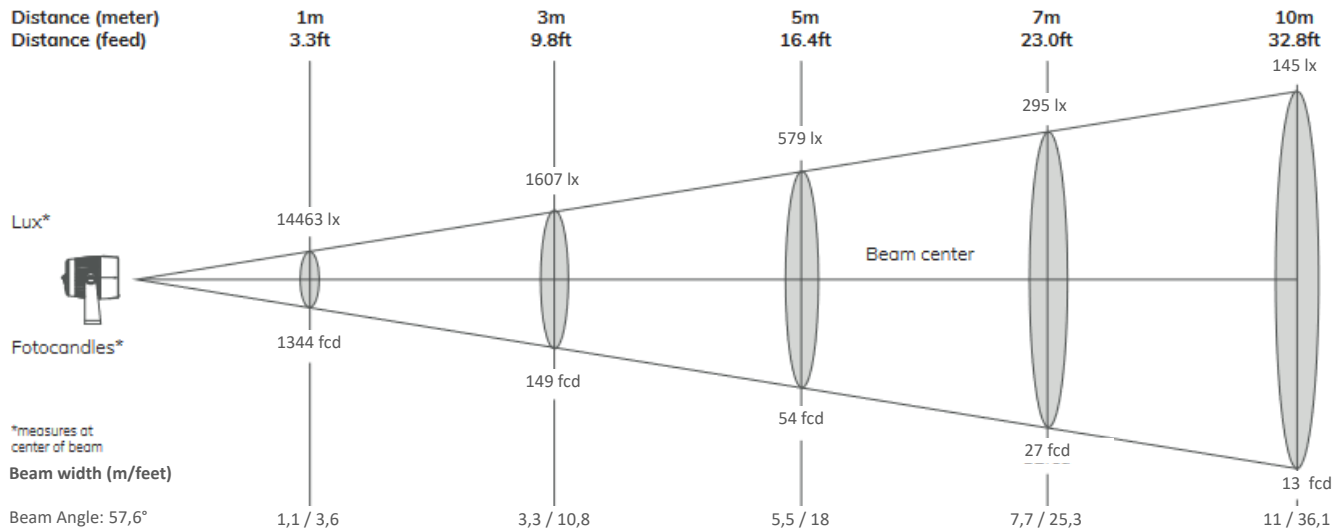
x: 0,333 y: 0,341

Light Quality

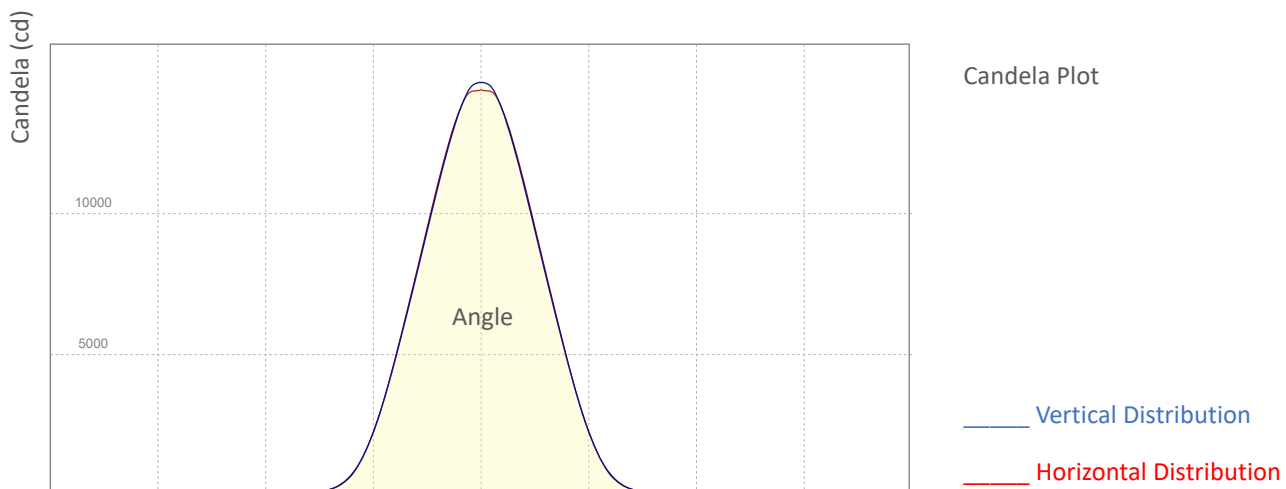
CRI: 92,8

Color Temperature

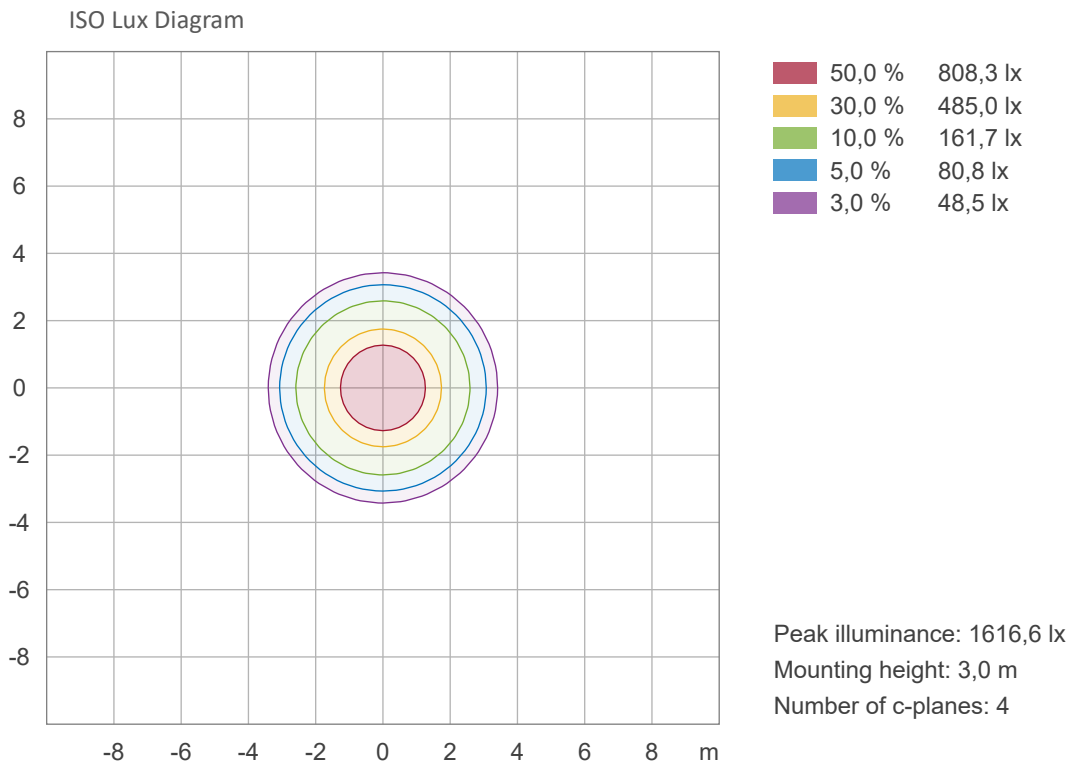
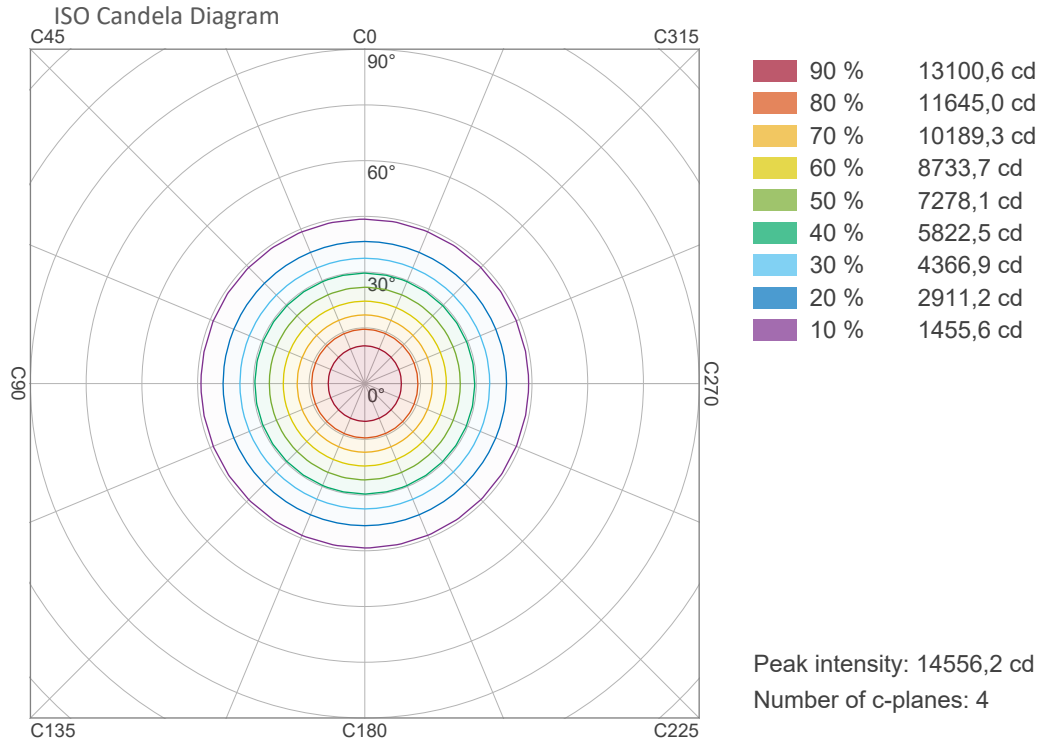
5496 K



Angle	Distance									
	1m / 3.3ft		3m / 9.8ft		5m / 16.4ft		7m / 23ft		10m / 32.8ft	
	Lux Center lx/fcd	Diameter m/feet	Lux Center lx/fcd	Diameter m/feet	Lux Center lx/fcd	Diameter m/feet	Lux Center lx/fcd	Diameter m/feet	Lux Center lx/fcd	Diameter m/feet
Beam Angle: 57,6°	14463/ 1344	1,1/3,6	1607/ 149	3,3/10,8	579/ 54	5,5/18	295/ 27	7,7/25,3	145/ 13	11/36,1

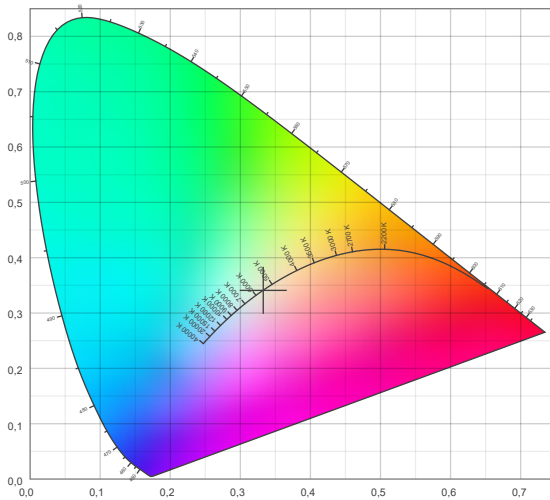


ISO Diagrams

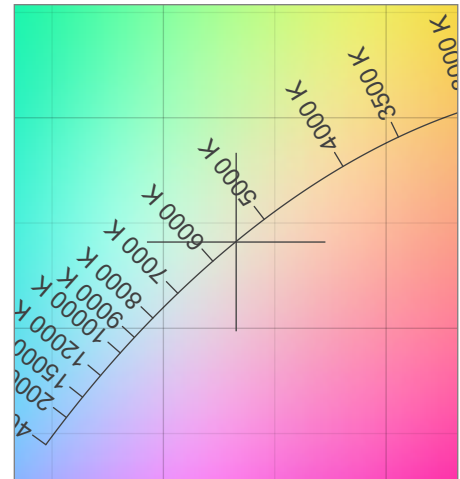


Chromaticity

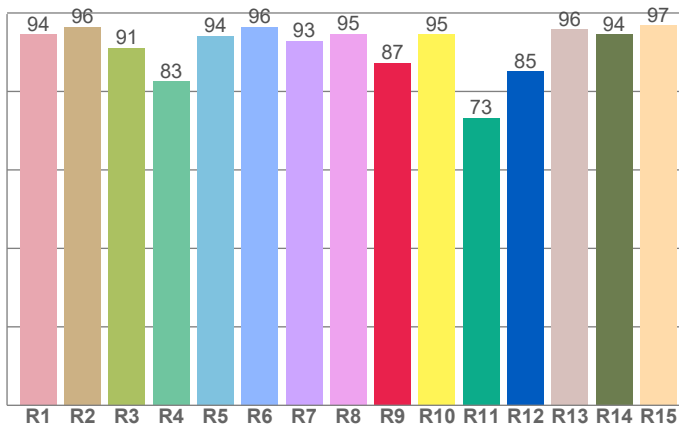
CIE 1931



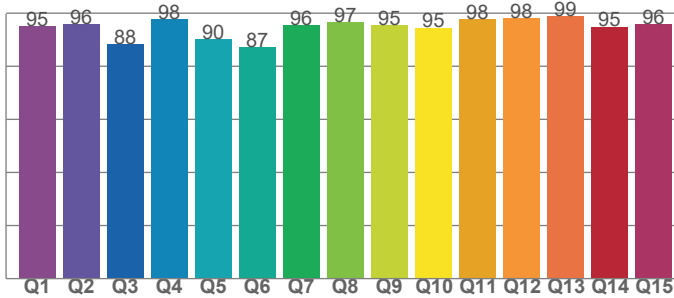
CIE 1931 - Zoom



CRI: 92,8 (R1-R8)



CQS: 93,8



Color Temperature	Color Coordinate CIE 1931	Color Coordinate CIE 1931
CCT	x	y
5496K	0,333	0,341

Color Deviation Black Body Curve	Color Coordinate CIE 1964	Color Coordinate CIE 1964
Δuv	u	v
-0,0001	0,207	0,318

Color Rendering Index	Red Component	Color Quality Scale
CRI	CRI – R9	CQS
92,8	87,2	93,8

Television Lighting Consistency Index	Color Fidelity	Color Gamut
TLCI	TM30 – Rf	TM30 - Rg
83	91,5	106,6

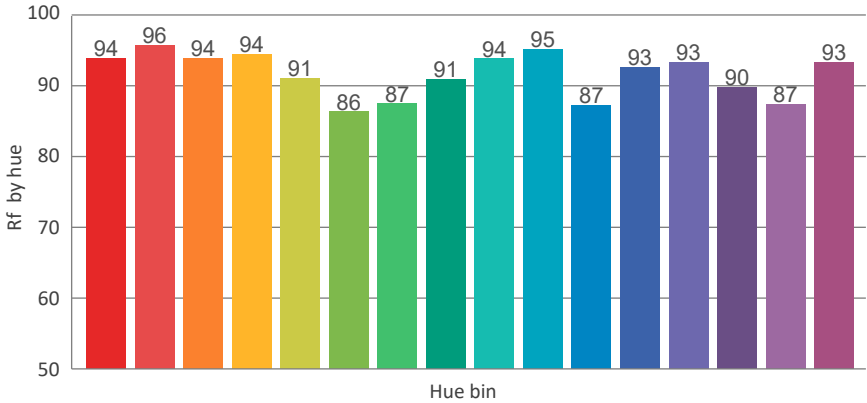
TM30 Details

Rf 91,5

Fidelity Index Rf

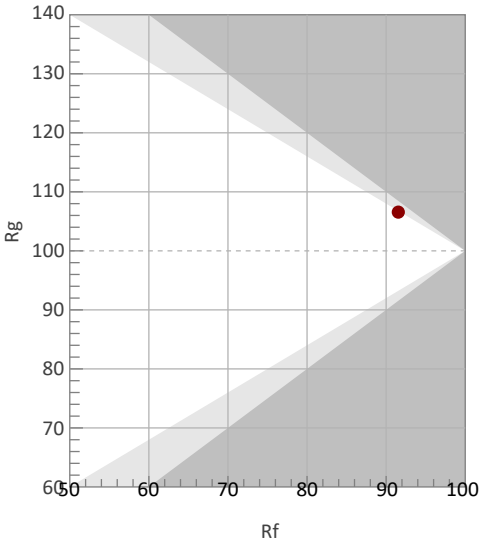
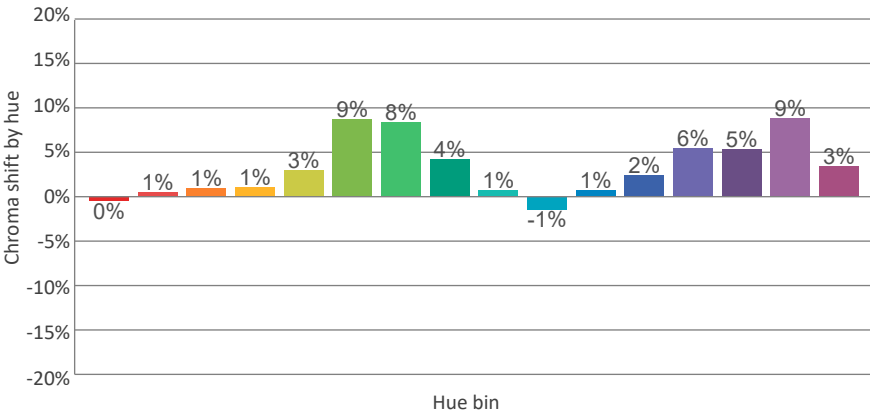
Rg 106,6

Gamut Index Rg

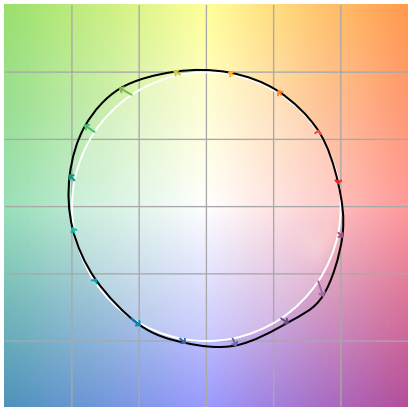


		Shifts (%)	
Hue Bin	Rf	Chroma	Hue
1		%	%
2		%	%
3		%	%
4		%	%
5		%	%
6		%	%
7		%	%
8		%	%
9		%	%
10		%	%
11		%	%
12		%	%
13		%	%
14		%	%
15		%	%
16		%	%

TM30_BIN_VALUES_END)



Color Vector Graphics



Color Distortion Graphics



Color Evaluation Sample

