

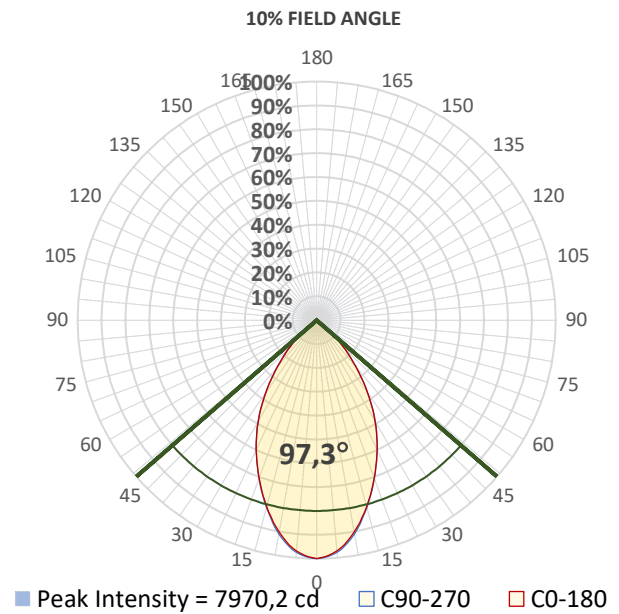
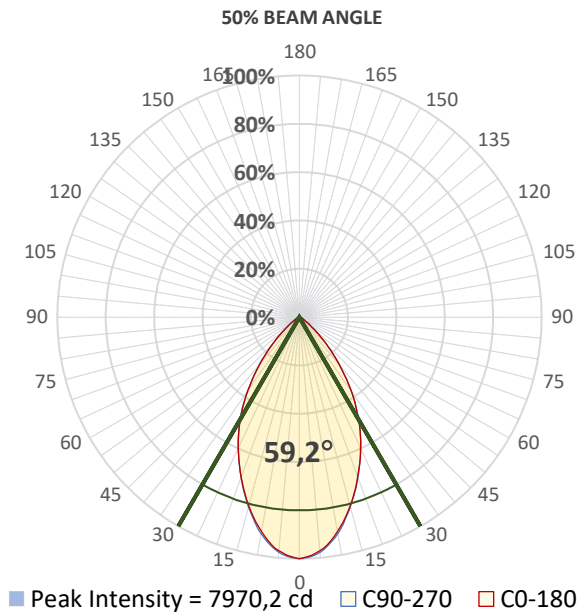
Report Summary



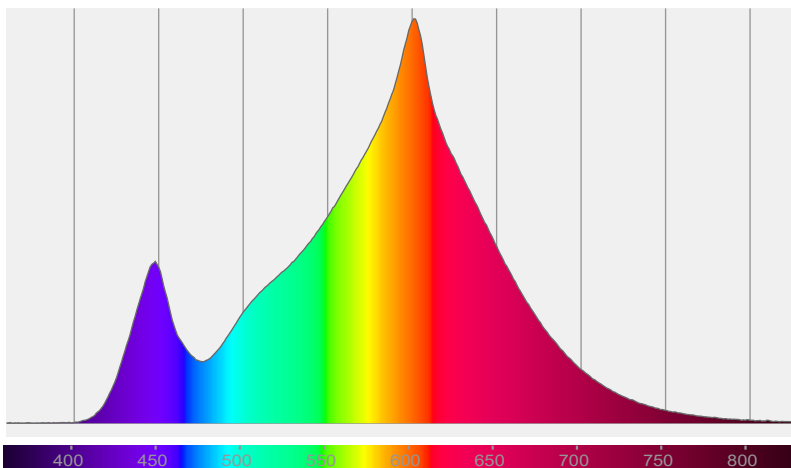
Measurements

Photometrical Parameter	Optical Parameters	Electrical Parameters
Fixture Output: 8067 lm / 7974 cd	Beam Angle (50%): 59,2°	AC Supply: 226 V / 50 Hz
Fixture Efficiency: 33 lm/W	Field Angle (10%): 97,3°	Power: 244,7 W
Intensity @ 5m: 319 lx	Cutoff Angle (2,5%): 116,6°	Current: 1,17 A
Color Temperature: 3000 K		Power Factor: 0,93
CRI: 78,2		
CRI R9 Value: -19,6		
CQS: 77,4		
TLCI: 55		
TM-30 Rf: 81,3		
TM-30 Rg: 95,9		

Details



Spectral Distribution



CIE 1931

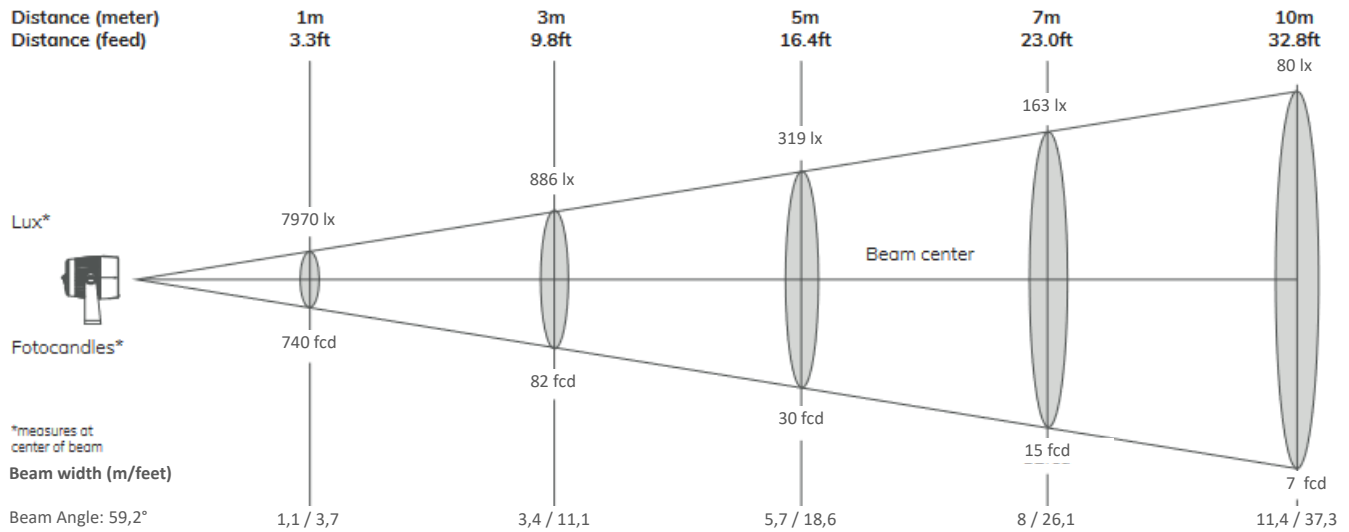
x: 0,434 y: 0,398

Light Quality

CRI: 78,2

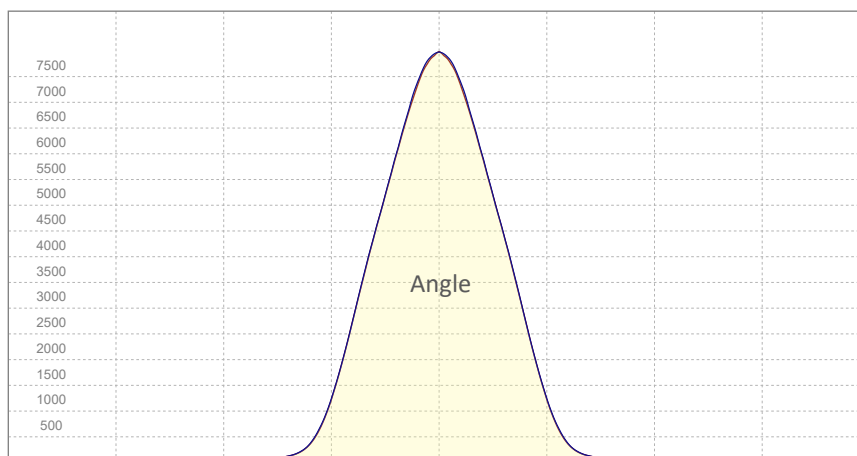
Color Temperature

3000 K



Angle	Distance									
	1m / 3.3ft		3m / 9.8ft		5m / 16.4ft		7m / 23ft		10m / 32.8ft	
	Lux Center lx/fcd	Diameter m/feet	Lux Center lx/fcd	Diameter m/feet	Lux Center lx/fcd	Diameter m/feet	Lux Center lx/fcd	Diameter m/feet	Lux Center lx/fcd	Diameter m/feet
Beam Angle: 59,2°	7970/ 740	1,1/3,7	886/ 82	3,4/11,1	319/ 30	5,7/18,6	163/ 15	8/26,1	80/ 7	11,4/37,3

Candela (cd)

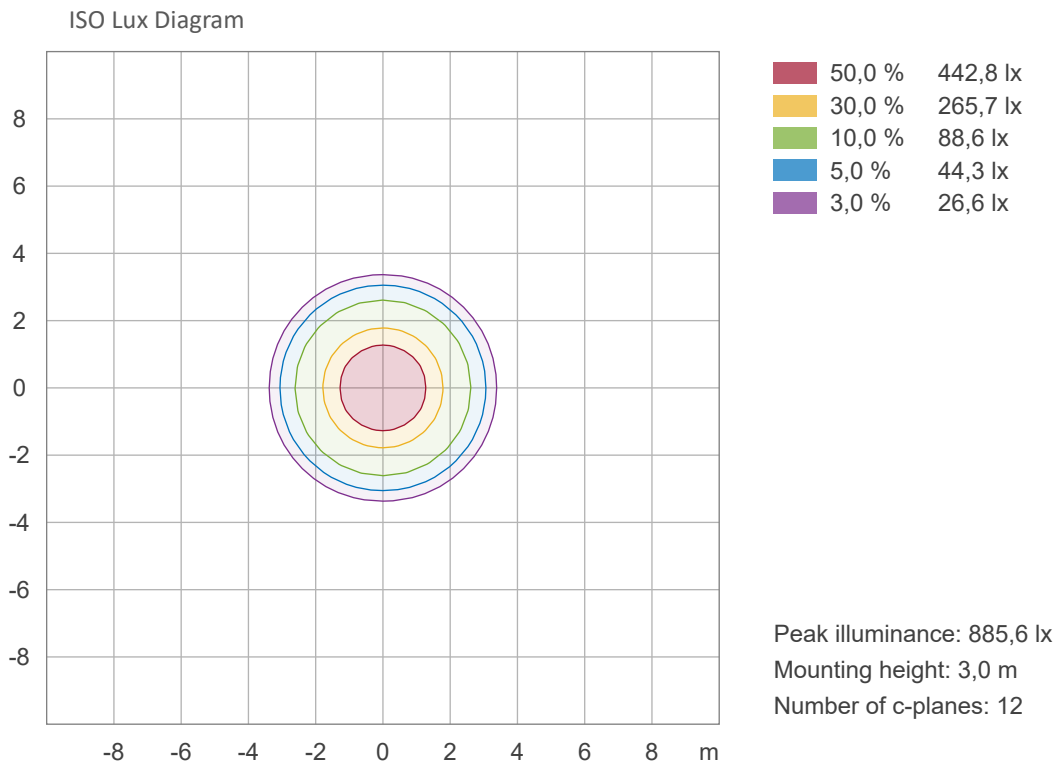
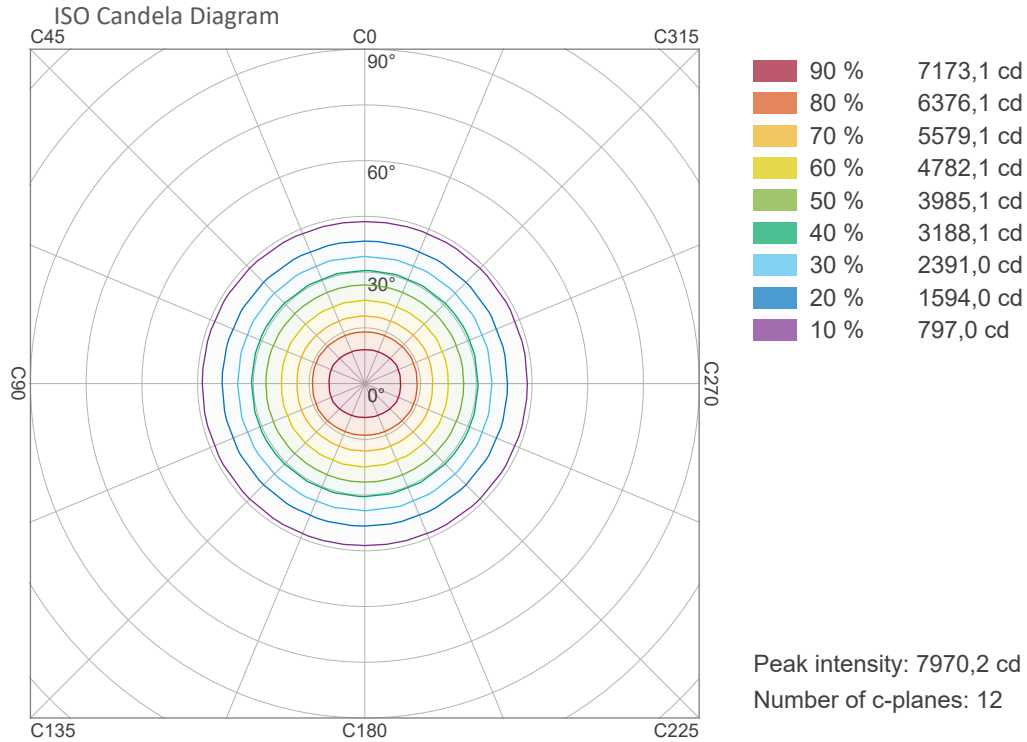


Candela Plot

Vertical Distribution

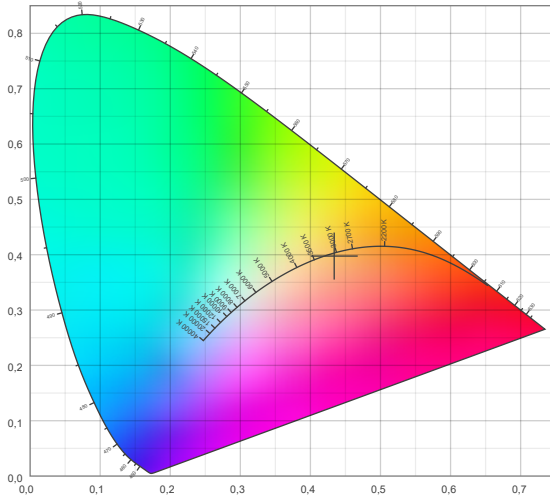
Horizontal Distribution

ISO Diagrams

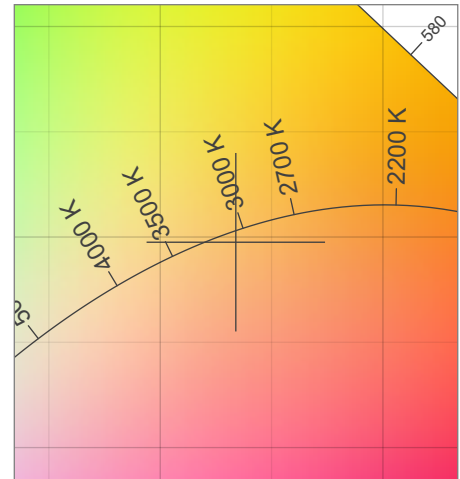


Chromaticity

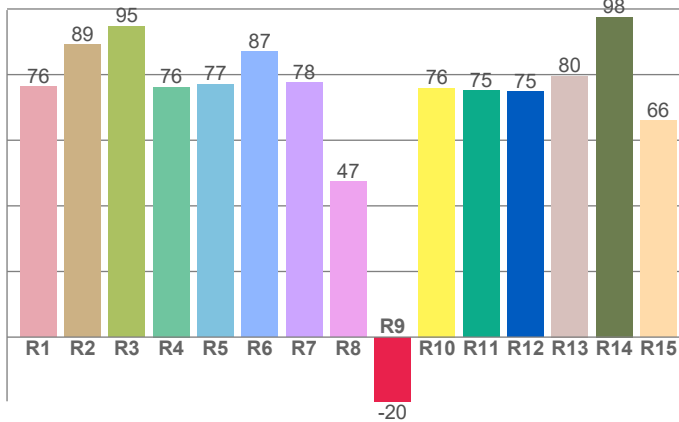
CIE 1931



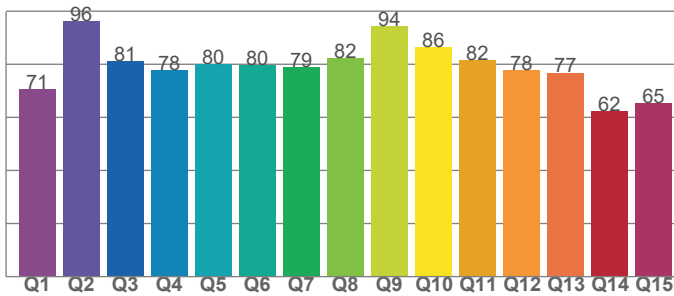
CIE 1931 - Zoom



CRI: 78,2 (R1-R8)



CQS: 77,4



Color Temperature	Color Coordinate CIE 1931	Color Coordinate CIE 1931
CCT	x	y
3000K	0,434	0,398

Color Deviation Black Body Curve	Color Coordinate CIE 1964	Color Coordinate CIE 1964
Δuv	u	v
-0,0022	0,251	0,346

Color Rendering Index	Red Component	Color Quality Scale
CRI	CRI – R9	CQS
78,2	-19,6	77,4

Television Lighting Consistency Index	Color Fidelity	Color Gamut
TLCI	TM30 – Rf	TM30 – Rg
55	81,3	95,9

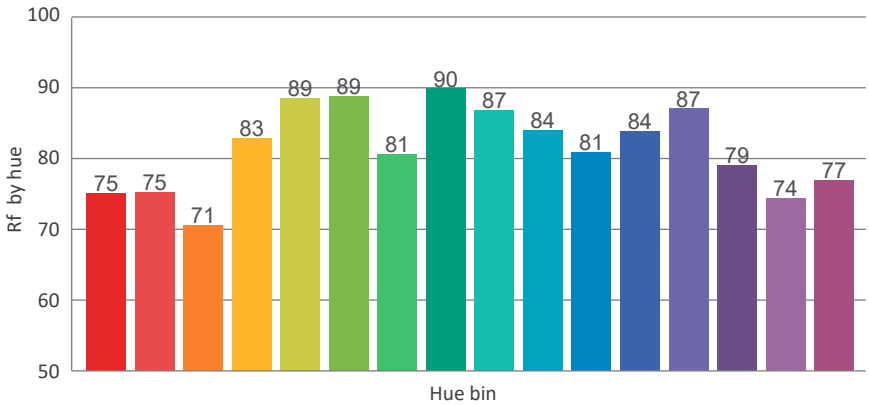
TM30 Details

Rf 81,3

Fidelity Index Rf

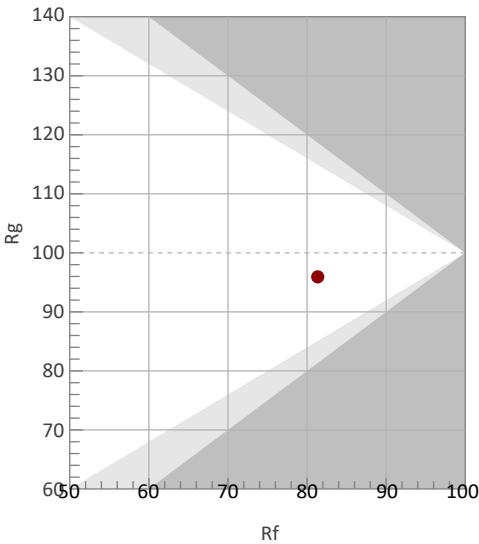
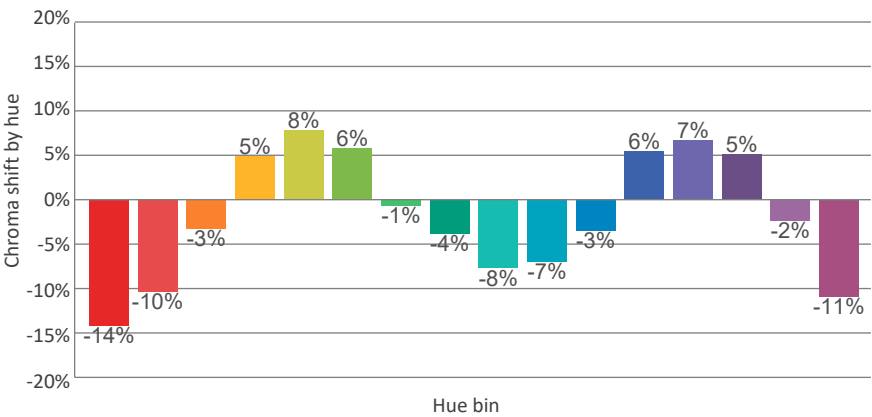
Rg 95,9

Gamut Index Rg

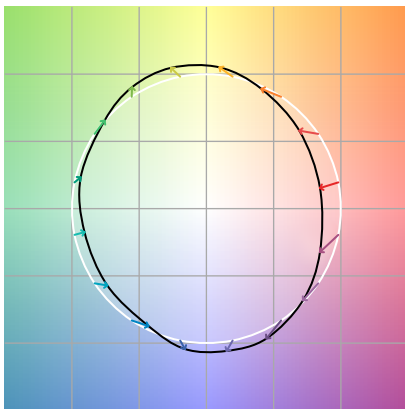


		Shifts (%)	
Hue Bin	Rf	Chroma	Hue
1		%	%
2		%	%
3		%	%
4		%	%
5		%	%
6		%	%
7		%	%
8		%	%
9		%	%
10		%	%
11		%	%
12		%	%
13		%	%
14		%	%
15		%	%
16		%	%

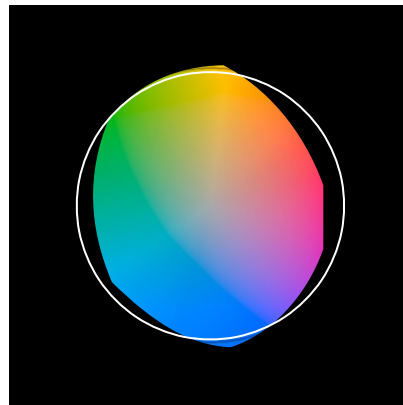
TM30_BIN_VALUES_END)



Color Vector Graphics



Color Distortion Graphics



Color Evaluation Sample

