

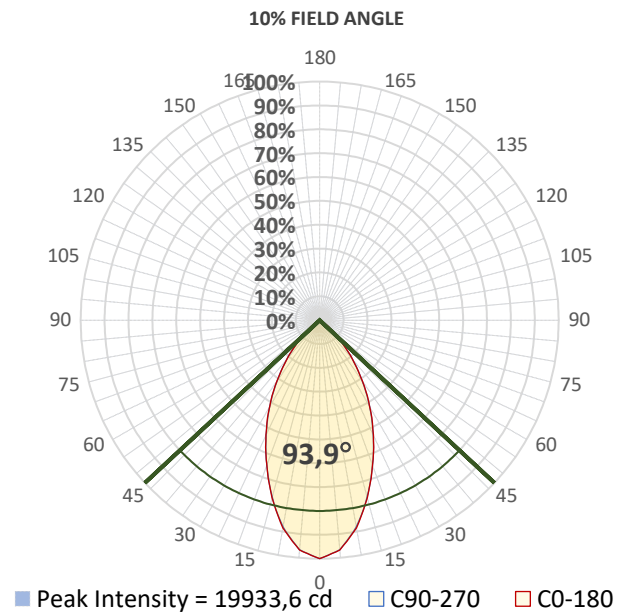
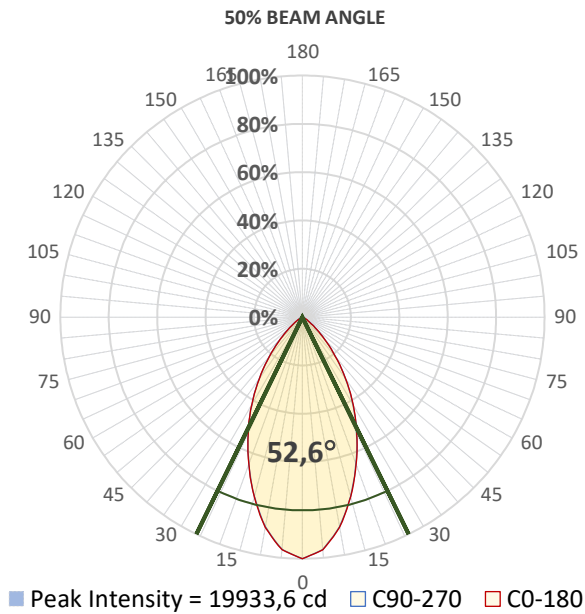
Report Summary



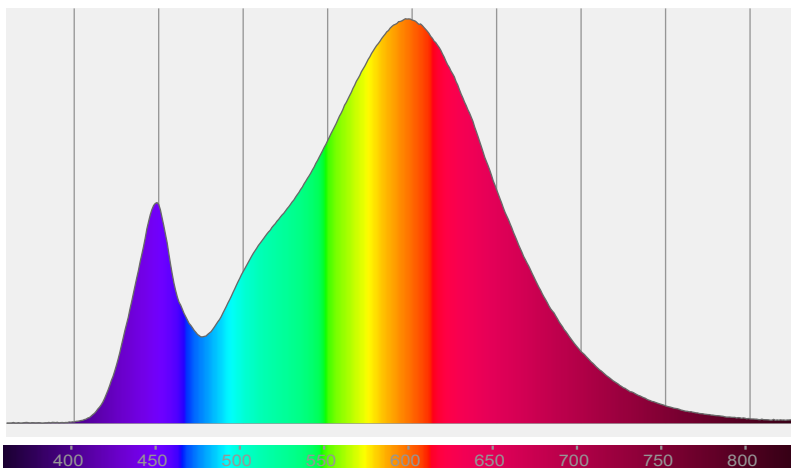
Measurements

Photometrical Parameter	Optical Parameters	Electrical Parameters
Fixture Output: 17696 lm / 19962 cd	Beam Angle (50%): 52,6°	AC Supply: 224 V / 50 Hz
Fixture Efficiency: 26 lm/W	Field Angle (10%): 93,9°	Power: 682,3 W
Intensity @ 5m: 797 lx	Cutoff Angle (2,5%): 112,7°	Current: 3,56 A
Color Temperature: 3265 K		Power Factor: 0,86
CRI: 80,8		
CRI R9 Value: 3,2		
CQS: 80,5		
TLCI: 66		
TM-30 Rf: 83,6		
TM-30 Rg: 96,4		

Details



Spectral Distribution



CIE 1931

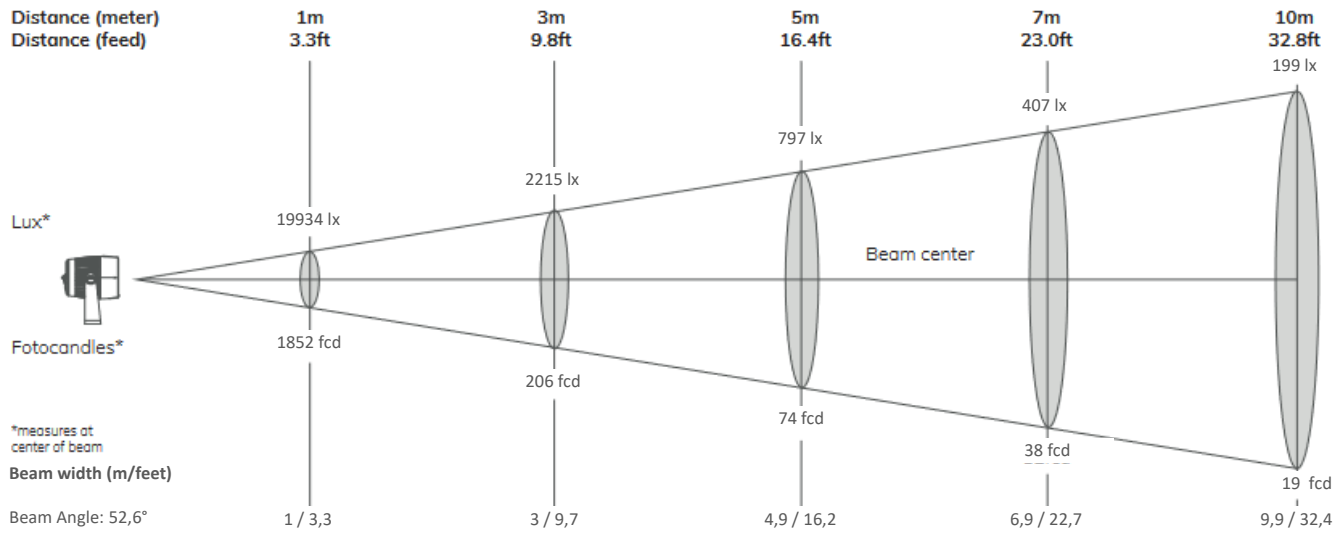
x: 0,420 y: 0,399

Light Quality

CRI: 80,8

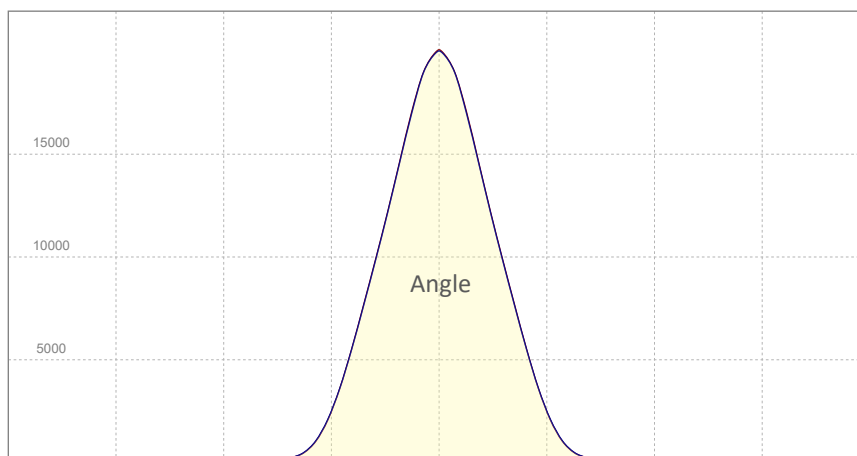
Color Temperature

3265 K



Angle	Distance									
	1m / 3.3ft		3m / 9.8ft		5m / 16.4ft		7m / 23ft		10m / 32.8ft	
	Lux Center lx/fcd	Diameter m/feet	Lux Center lx/fcd	Diameter m/feet	Lux Center lx/fcd	Diameter m/feet	Lux Center lx/fcd	Diameter m/feet	Lux Center lx/fcd	Diameter m/feet
Beam Angle: 52,6°	19934/1852	1/3,3	2215/206	3/9,7	797/74	4,9/16,2	407/38	6,9/22,7	199/19	9,9/32,4

Candela (cd)

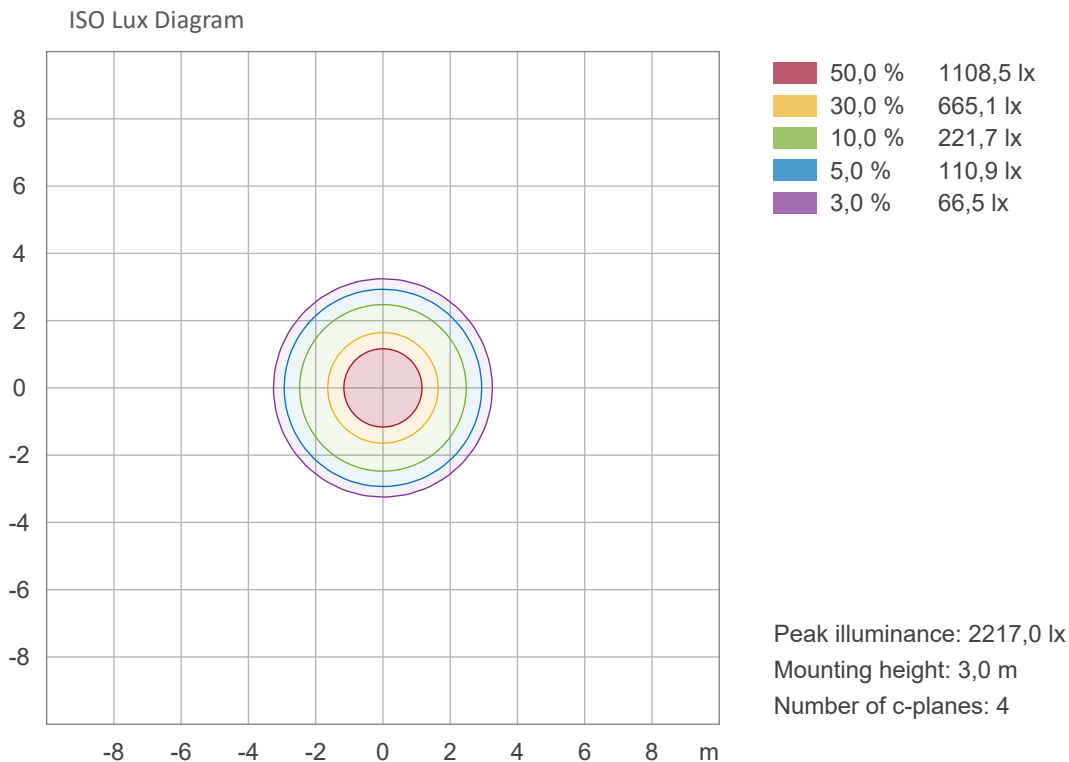
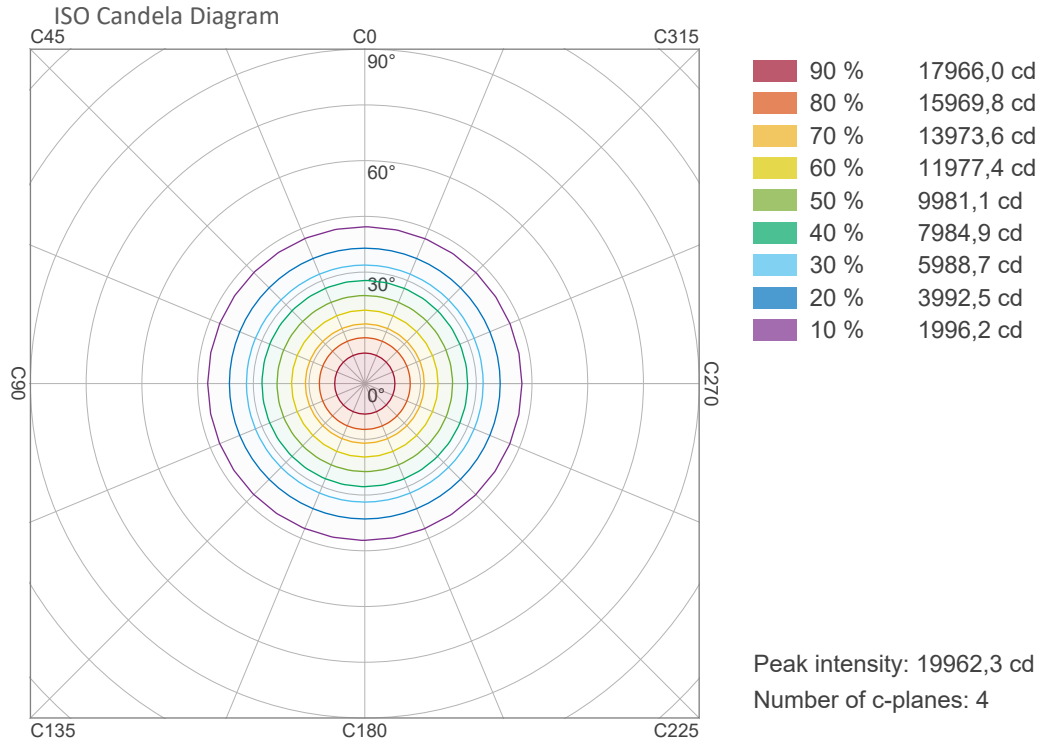


Candela Plot

Vertical Distribution

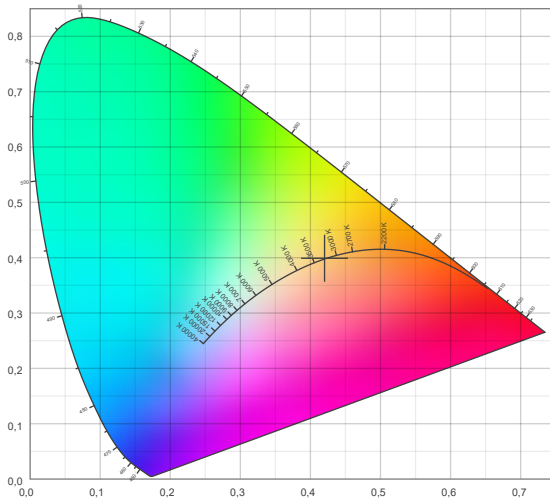
Horizontal Distribution

ISO Diagrams

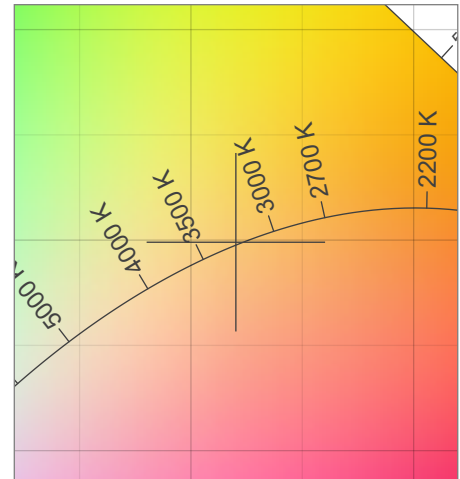


Chromaticity

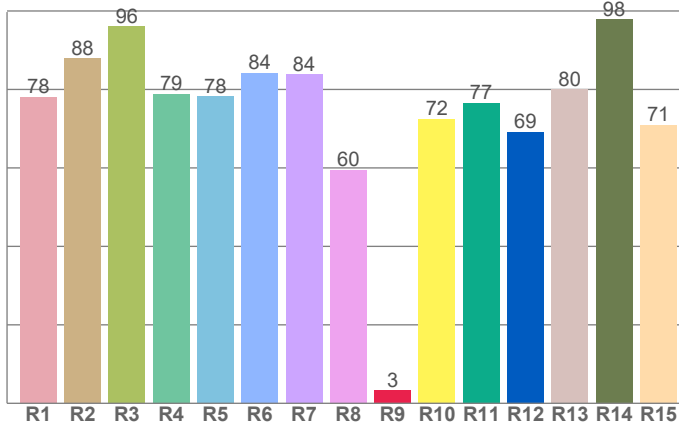
CIE 1931



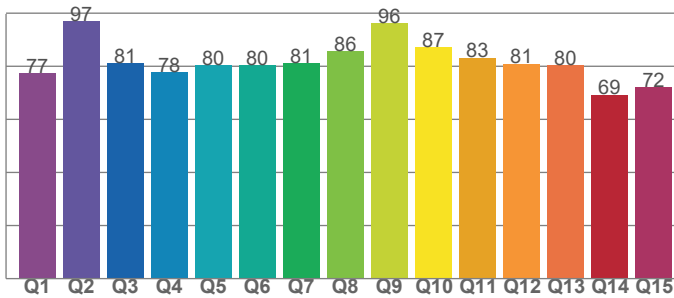
CIE 1931 - Zoom



CRI: 80,8 (R1-R8)



CQS: 80,5



Color Temperature	Color Coordinate CIE 1931	Color Coordinate CIE 1931
CCT	x	y
3265K	0,420	0,399

Color Deviation Black Body Curve	Color Coordinate CIE 1964	Color Coordinate CIE 1964
Δuv	u	v
0,0006	0,242	0,345

Color Rendering Index	Red Component	Color Quality Scale
CRI	CRI – R9	CQS
80,8	3,2	80,5

Television Lighting Consistency Index	Color Fidelity	Color Gamut
TLCI	TM30 – Rf	TM30 - Rg
66	83,6	96,4

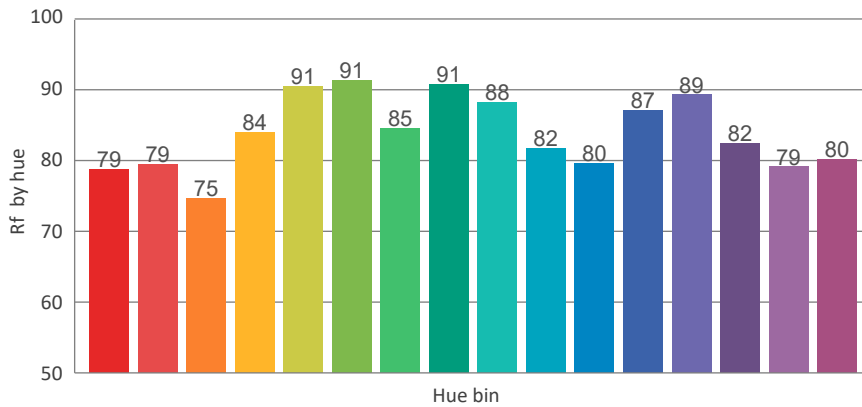
TM30 Details

Rf 83,6

Fidelity Index Rf

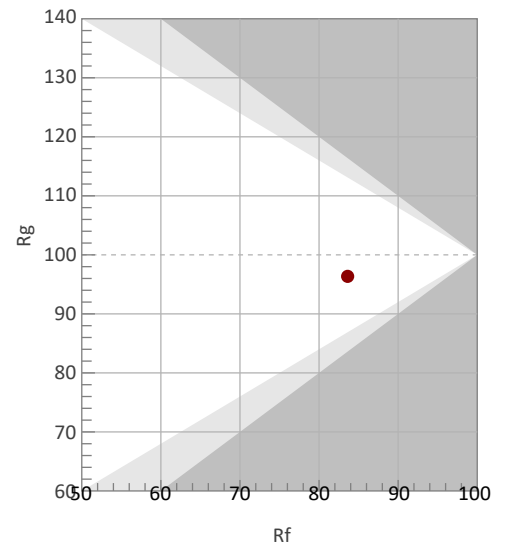
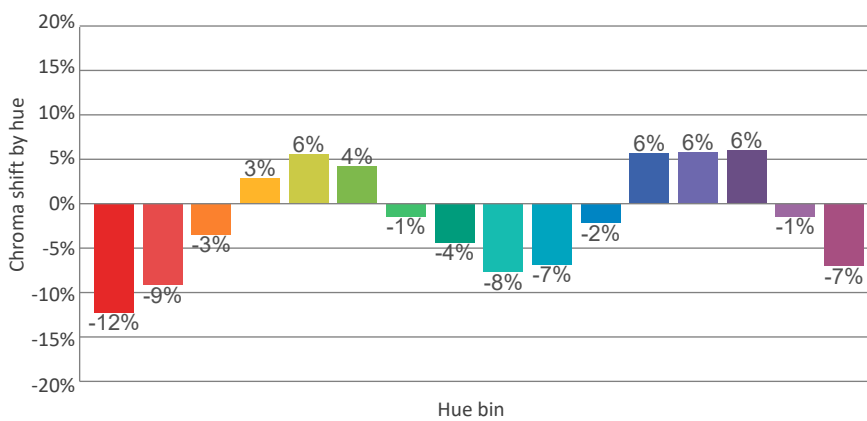
Rg 96,4

Gamut Index Rg

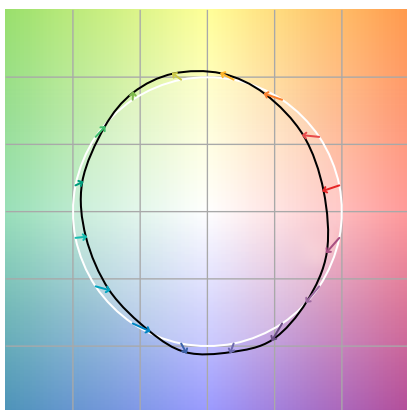


		Shifts (%)	
Hue Bin	Rf	Chroma	Hue
1		%	%
2		%	%
3		%	%
4		%	%
5		%	%
6		%	%
7		%	%
8		%	%
9		%	%
10		%	%
11		%	%
12		%	%
13		%	%
14		%	%
15		%	%
16		%	%

TM30_BIN_VALUES_END)



Color Vector Graphics



Color Distortion Graphics



Color Evaluation Sample

