

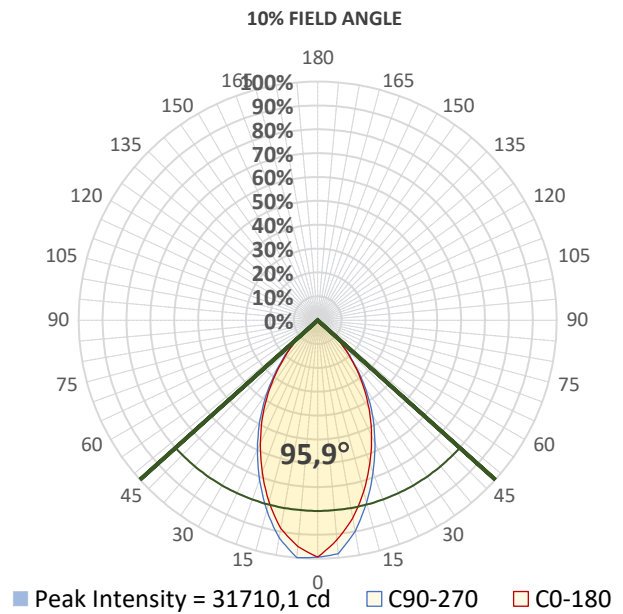
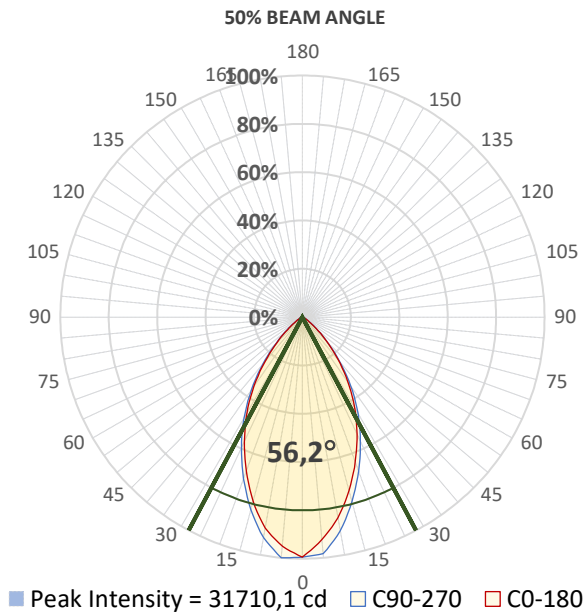
Report Summary



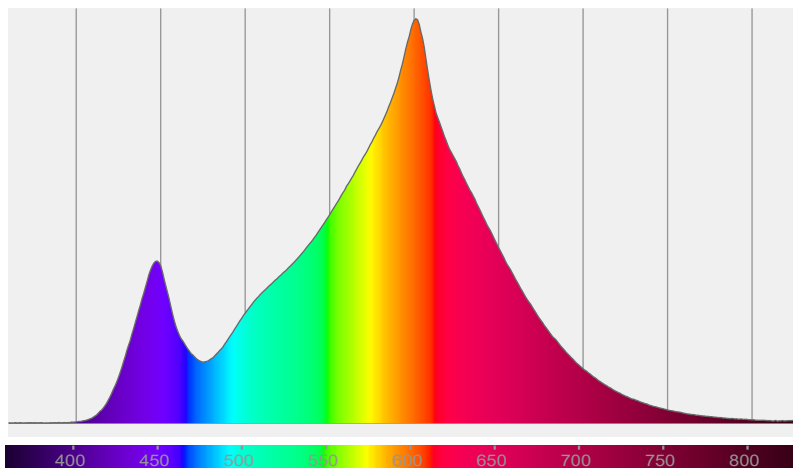
Measurements

Photometrical Parameter	Optical Parameters	Electrical Parameters
Fixture Output: 30254 lm / 32408 cd	Beam Angle (50%): 56,2°	AC Supply: 222 V / 50 Hz
Fixture Efficiency: 27 lm/W	Field Angle (10%): 95,9°	Power: 1114,6 W
Intensity @ 5m: 1260 lx	Cutoff Angle (2,5%): 114,6°	Current: 5,30 A
Color Temperature: 3016 K		Power Factor: 0,95
CRI: 77,7		
CRI R9 Value: -21,2		
CQS: 77,1		
TLCI: 55		
TM-30 Rf: 81,0		
TM-30 Rg: 95,6		

Details



Spectral Distribution



CIE 1931

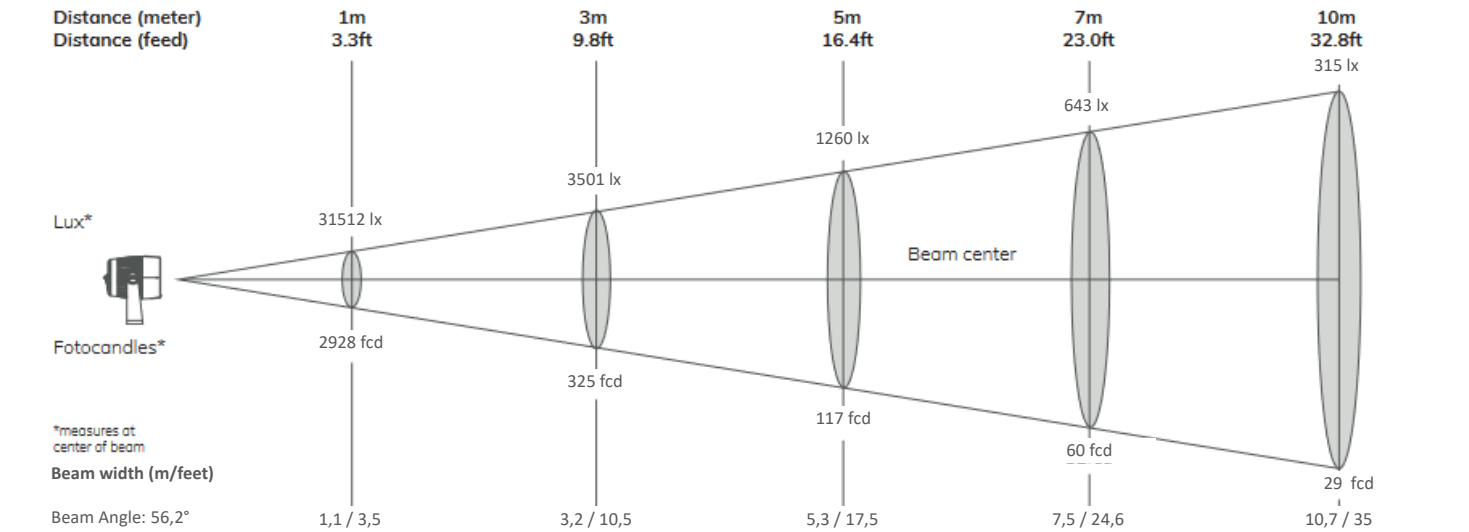
x: 0,433 y: 0,398

Light Quality

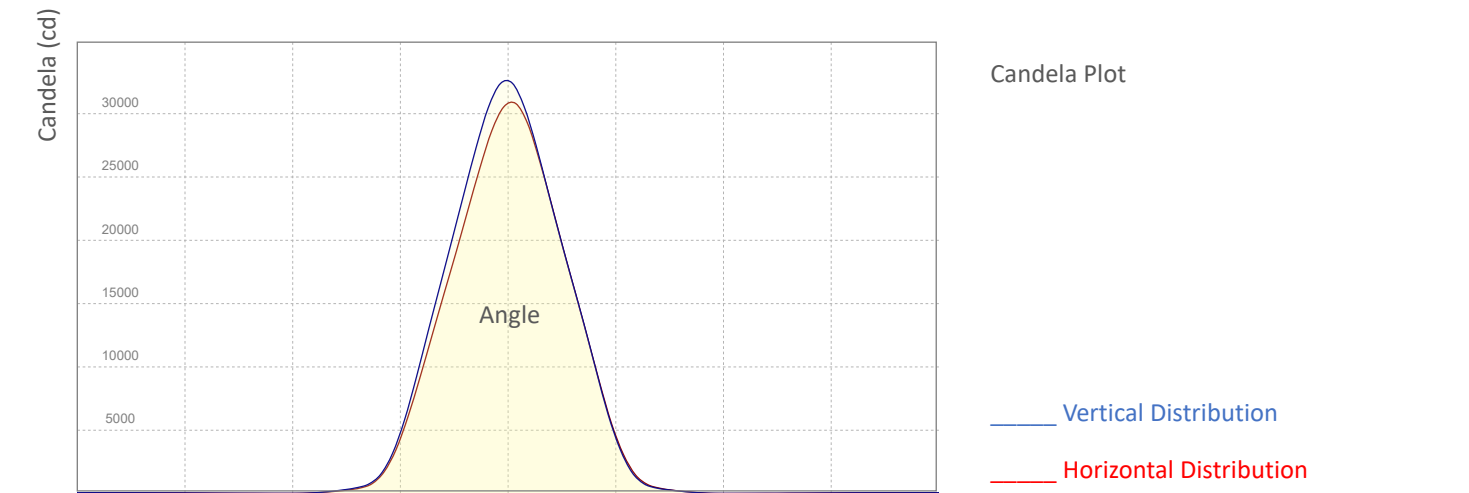
CRI: 77,7

Color Temperature

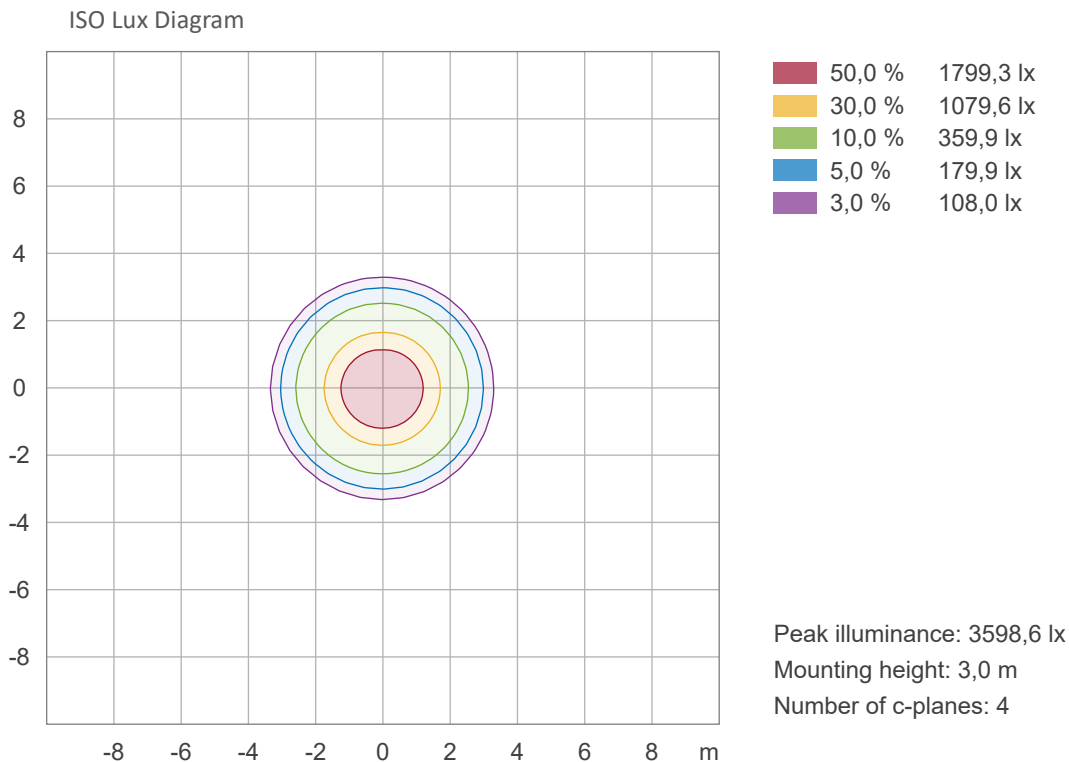
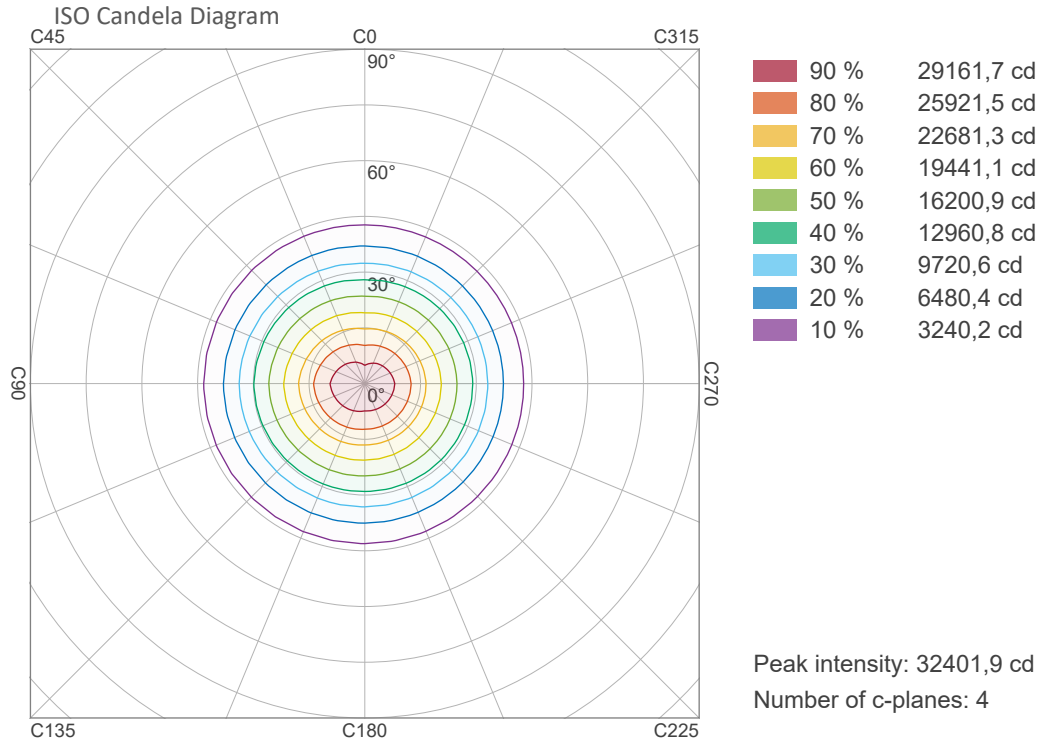
3016 K



Angle	Distance									
	1m / 3.3ft		3m / 9.8ft		5m / 16.4ft		7m / 23ft		10m / 32.8ft	
	Lux Center lx/fcd	Diameter m/feet	Lux Center lx/fcd	Diameter m/feet	Lux Center lx/fcd	Diameter m/feet	Lux Center lx/fcd	Diameter m/feet	Lux Center lx/fcd	Diameter m/feet
Beam Angle: 56,2°	31512/ 2928	1,1/3,5	3501/ 325	3,2/10,5	1260/ 117	5,3/17,5	643/ 60	7,5/24,6	315/ 29	10,7/35

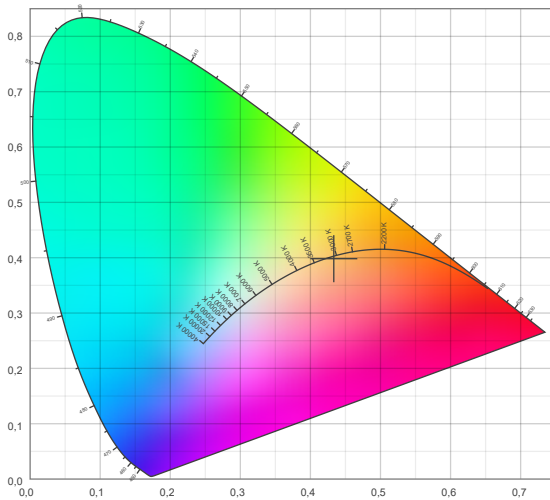


ISO Diagrams

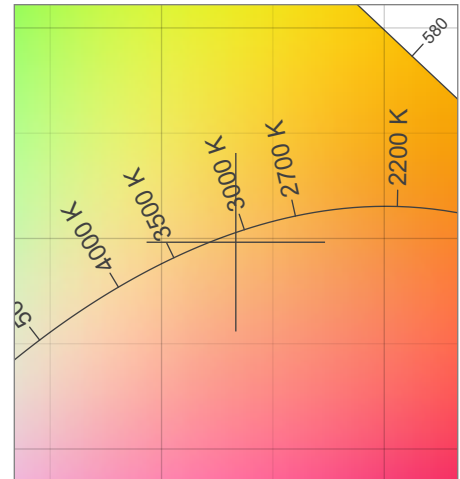


Chromaticity

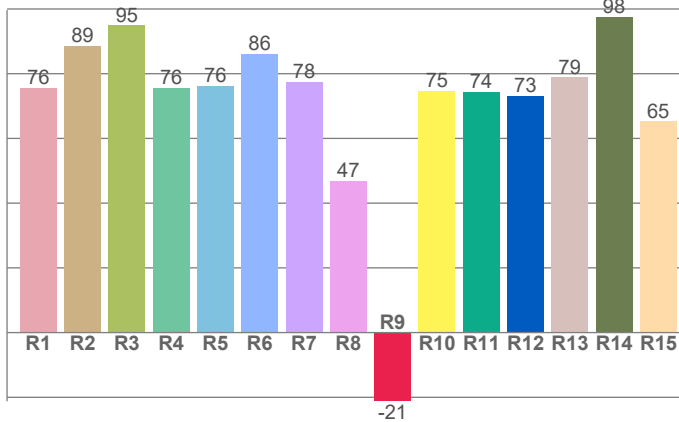
CIE 1931



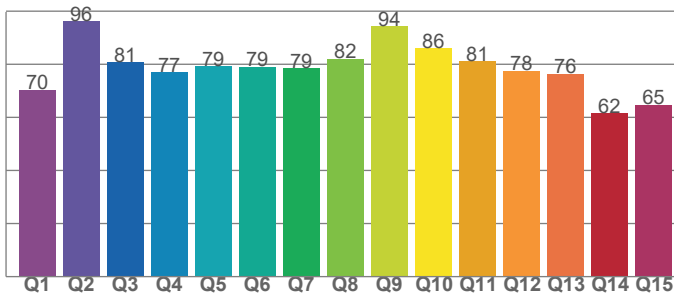
CIE 1931 - Zoom



CRI: 77,7 (R1-R8)



CQS: 77,1



Color Temperature	Color Coordinate CIE 1931	Color Coordinate CIE 1931
CCT	x	y
3016K	0,433	0,398

Color Deviation Black Body Curve	Color Coordinate CIE 1964	Color Coordinate CIE 1964
Δuv	u	v
-0,0019	0,251	0,346

Color Rendering Index	Red Component	Color Quality Scale
CRI	CRI – R9	CQS
77,7	-21,2	77,1

Television Lighting Consistency Index	Color Fidelity	Color Gamut
TLCI	TM30 – Rf	TM30 - Rg
55	81,0	95,6

TM30 Details

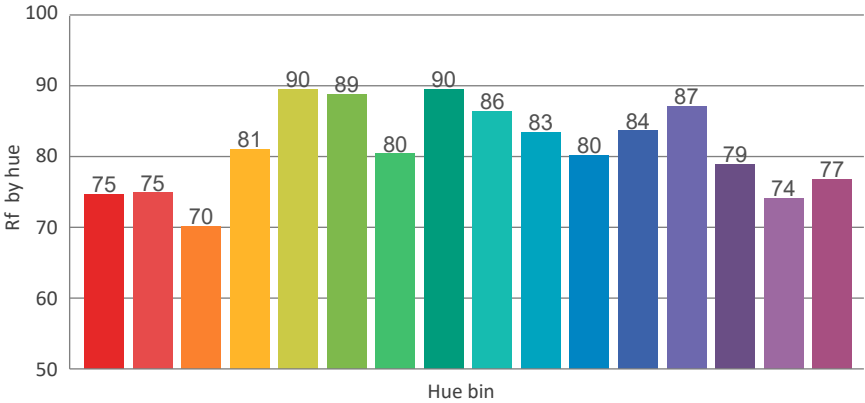
Rf 81,0

Fidelity Index Rf

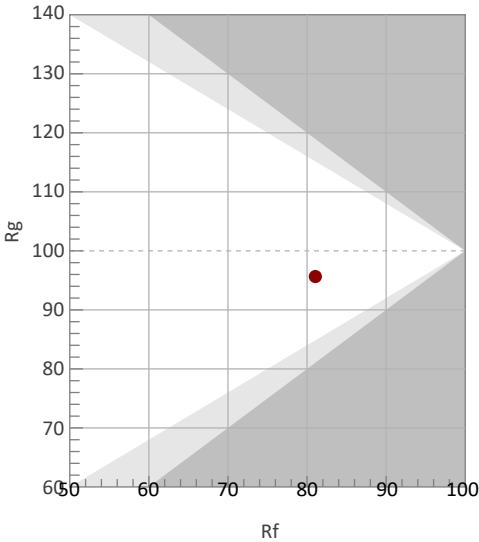
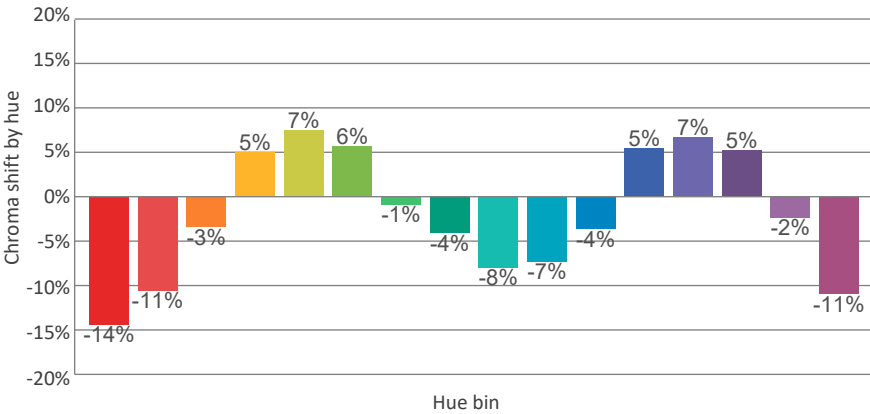
Rg 95,6

Gamut Index Rg

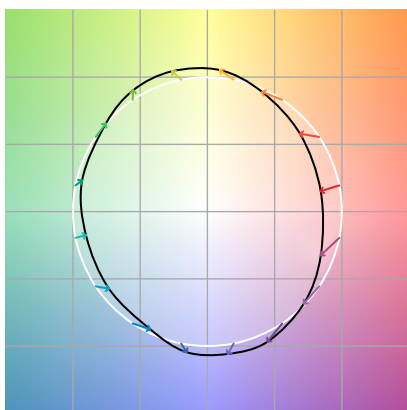
		Shifts (%)	
Hue Bin	Rf	Chroma	Hue
1		%	%
2		%	%
3		%	%
4		%	%
5		%	%
6		%	%
7		%	%
8		%	%
9		%	%
10		%	%
11		%	%
12		%	%
13		%	%
14		%	%
15		%	%
16		%	%



TM30_BIN_VALUES_END)



Color Vector Graphics



Color Distortion Graphics



Color Evaluation Sample

