

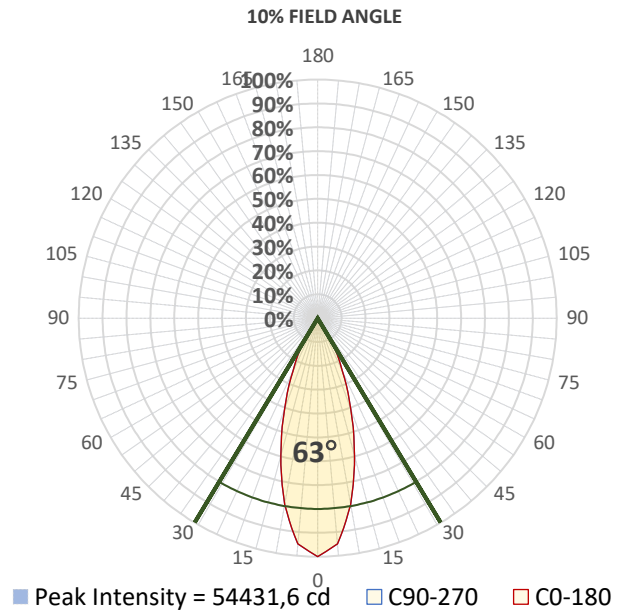
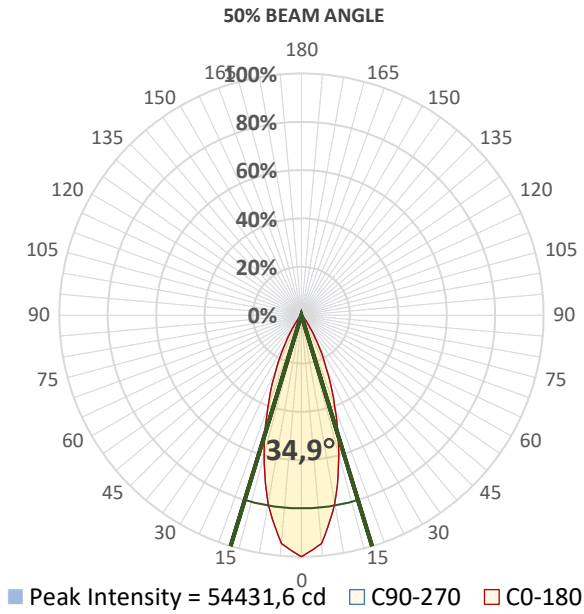
Report Summary



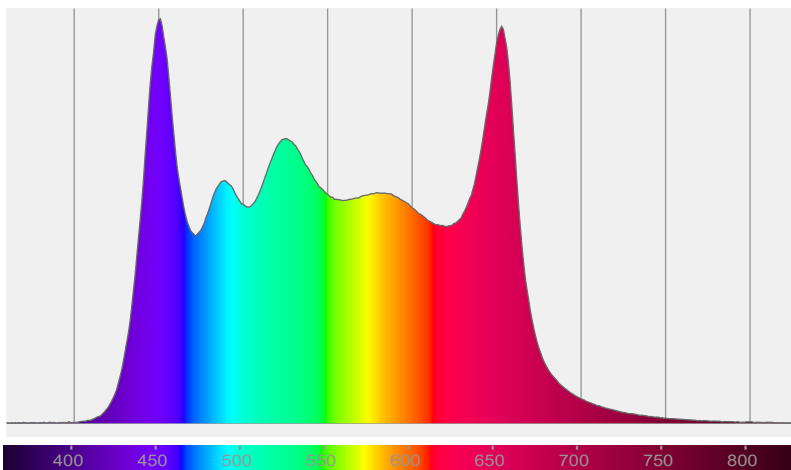
Measurements

Photometrical Parameter	Optical Parameters	Electrical Parameters
Fixture Output: 22786 lm / 54432 cd	Beam Angle (50%): 34,9°	AC Supply: 223 V / 50 Hz
Fixture Efficiency: 28 lm/W	Field Angle (10%): 63°	Power: 810,5 W
Intensity @ 5m: 2177 lx	Cutoff Angle (2,5%): 78,2°	Current: 3,71 A
Color Temperature: 5610 K		Power Factor: 0,98
CRI: 97,1		
CRI R9 Value: 79,2		
CQS: 97,2		
TLCI: 99		
TM-30 Rf: 94,4		
TM-30 Rg: 101,3		

Details



Spectral Distribution



CIE 1931

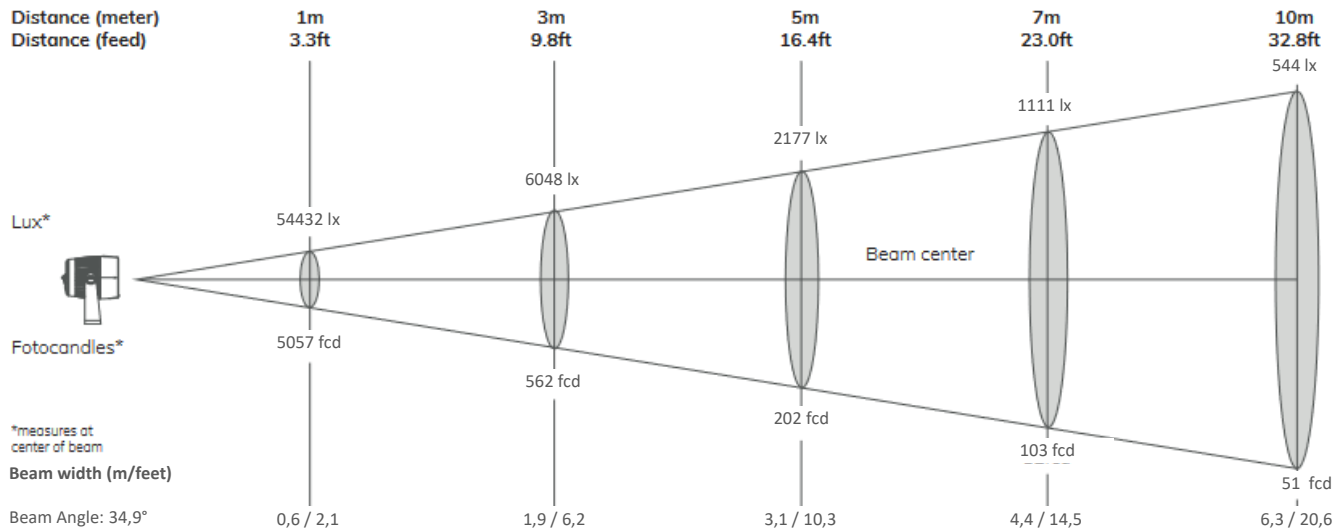
x: 0,330 y: 0,347

Light Quality

CRI: 97,1

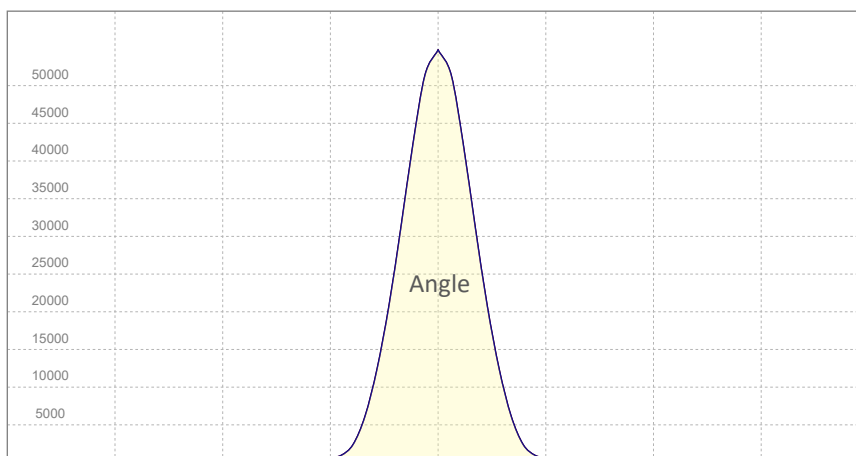
Color Temperature

5610 K



Angle	Distance									
	1m / 3.3ft		3m / 9.8ft		5m / 16.4ft		7m / 23ft		10m / 32.8ft	
	Lux Center lx/fcd	Diameter m/feet	Lux Center lx/fcd	Diameter m/feet	Lux Center lx/fcd	Diameter m/feet	Lux Center lx/fcd	Diameter m/feet	Lux Center lx/fcd	Diameter m/feet
Beam Angle: 34,9°	54432/ 5057	0,6/2,1	6048/ 562	1,9/6,2	2177/ 202	3,1/10,3	1111/ 103	4,4/14,5	544/ 51	6,3/20,6

Candela (cd)

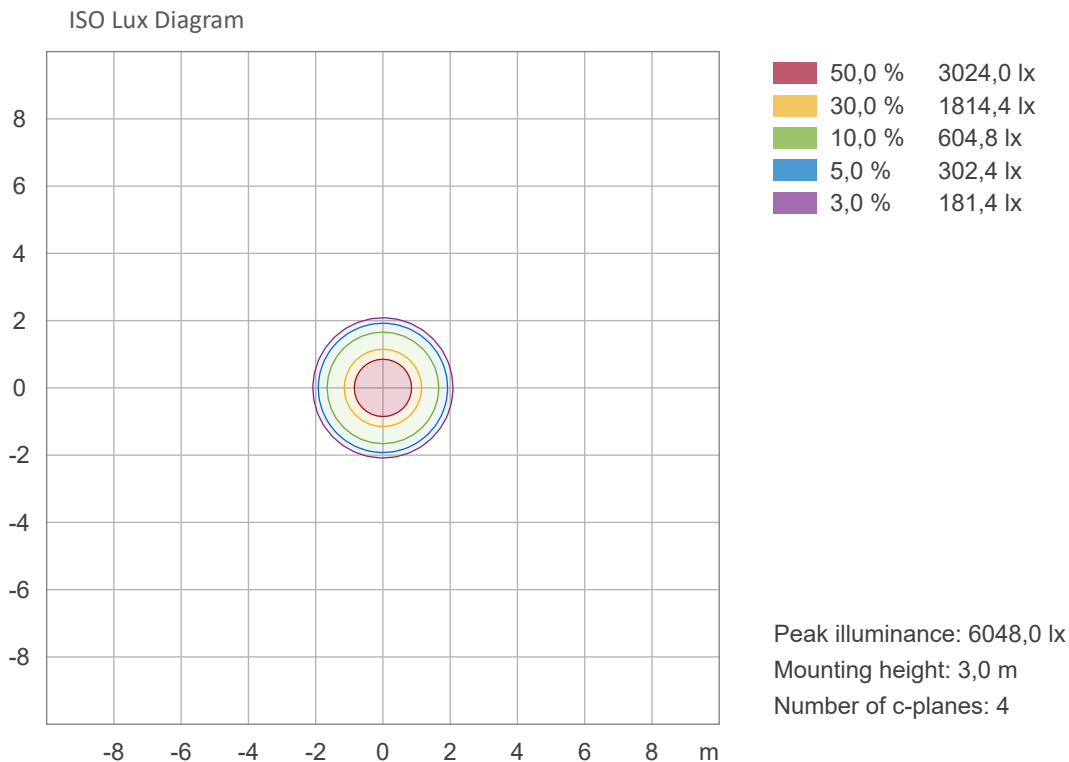
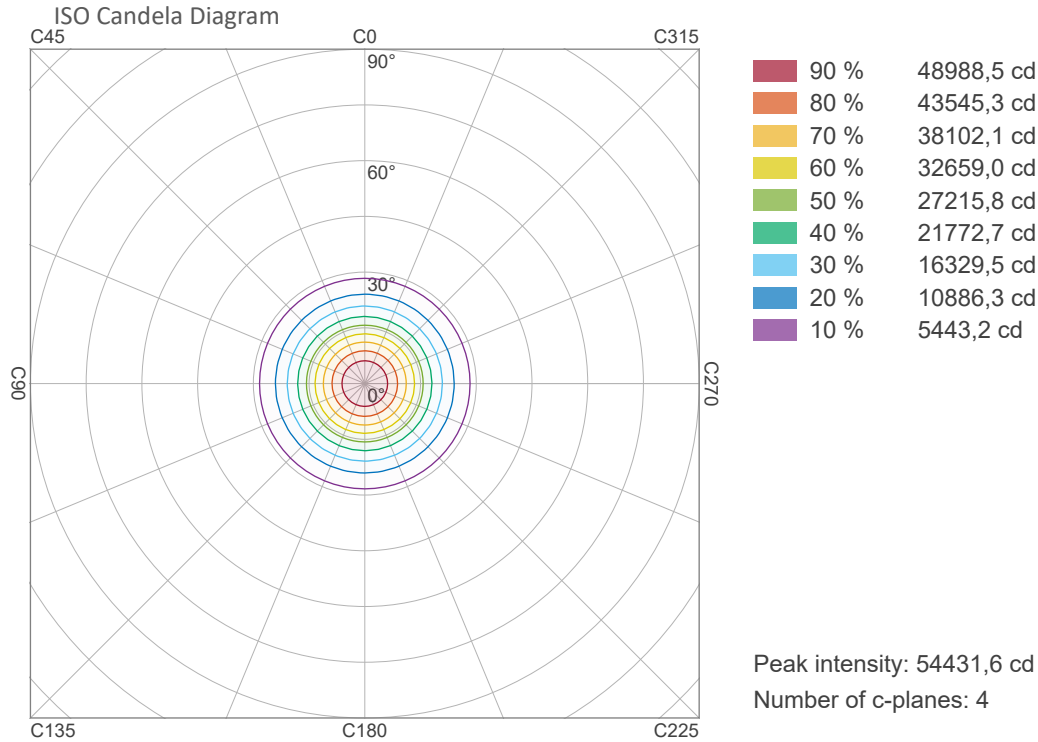


Candela Plot

Vertical Distribution

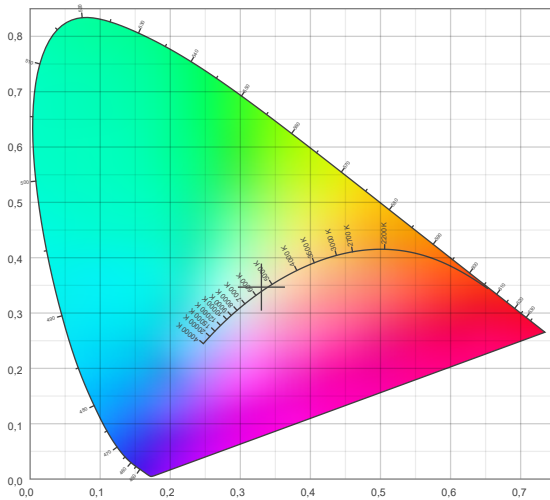
Horizontal Distribution

ISO Diagrams

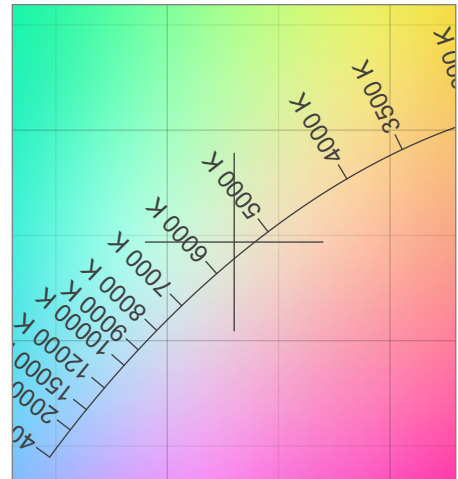


Chromaticity

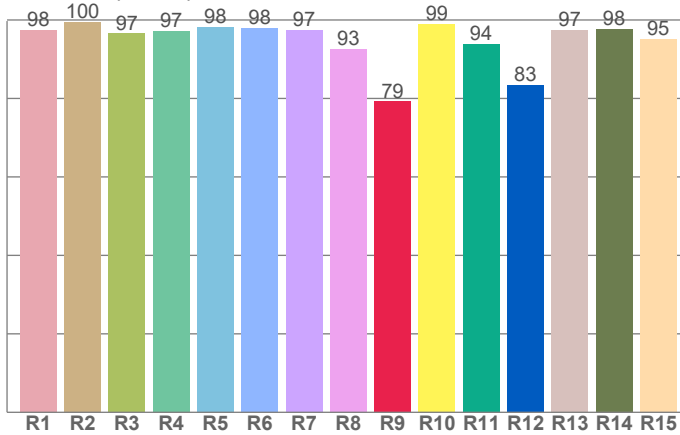
CIE 1931



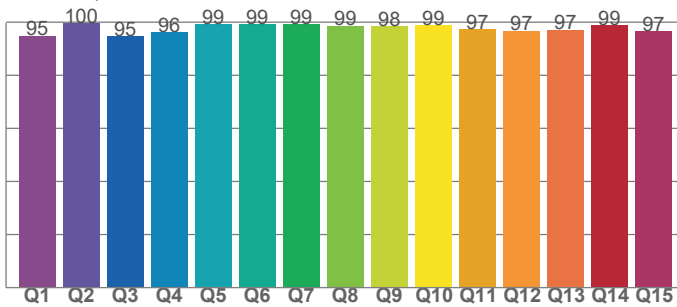
CIE 1931 - Zoom



CRI: 97,1 (R1-R8)



CQS: 97,2



Color Temperature	Color Coordinate CIE 1931	Color Coordinate CIE 1931
CCT	x	y
5610K	0,330	0,347

Color Deviation Black Body Curve	Color Coordinate CIE 1964	Color Coordinate CIE 1964
Δuv	u	v
0,0040	0,203	0,320

Color Rendering Index	Red Component	Color Quality Scale
CRI	CRI – R9	CQS
97,1	79,2	97,2

Television Lighting Consistency Index	Color Fidelity	Color Gamut
TLCI	TM30 – Rf	TM30 - Rg
99	94,4	101,3

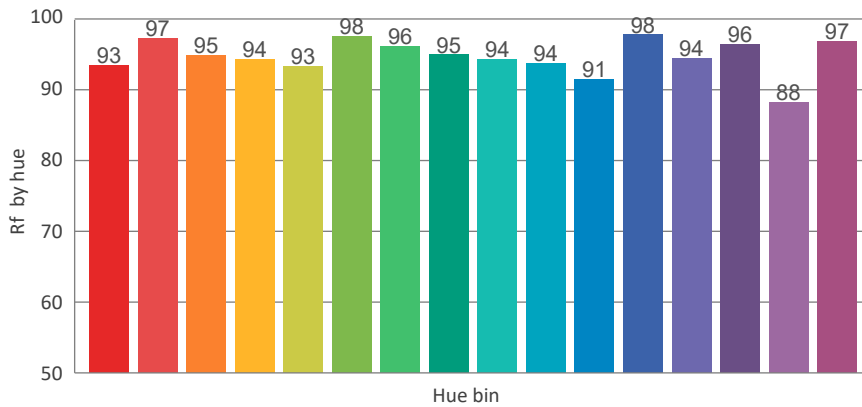
TM30 Details

Rf 94,4

Fidelity Index Rf

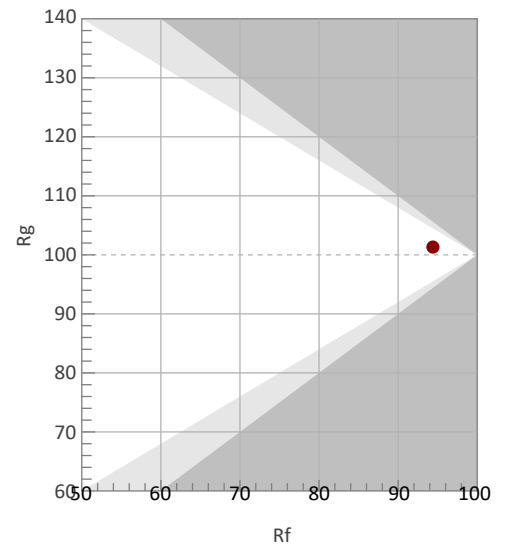
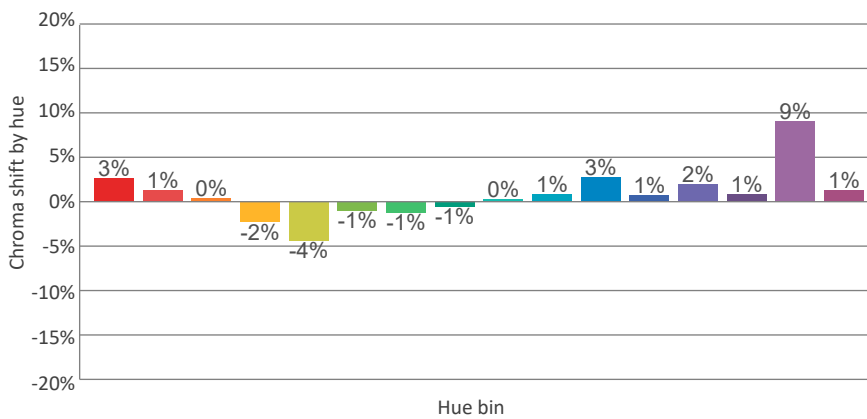
Rg 101,3

Gamut Index Rg

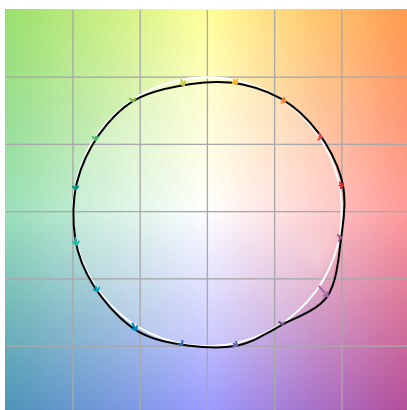


		Shifts (%)	
Hue Bin	Rf	Chroma	Hue
1		%	%
2		%	%
3		%	%
4		%	%
5		%	%
6		%	%
7		%	%
8		%	%
9		%	%
10		%	%
11		%	%
12		%	%
13		%	%
14		%	%
15		%	%
16		%	%

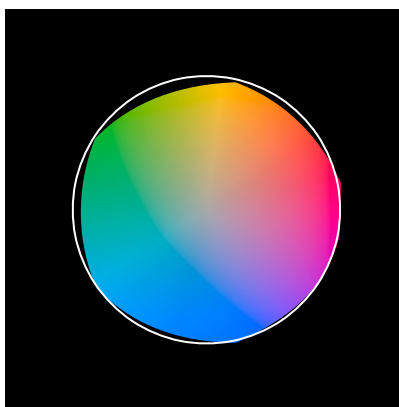
TM30_BIN_VALUES_END)



Color Vector Graphics



Color Distortion Graphics



Color Evaluation Sample

