

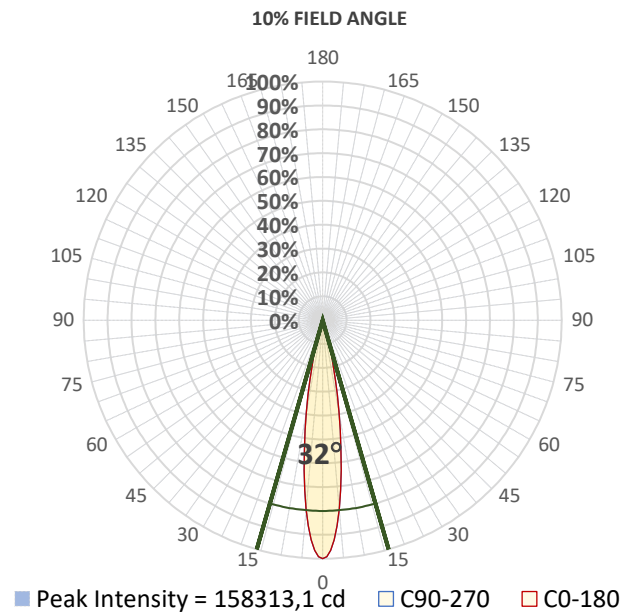
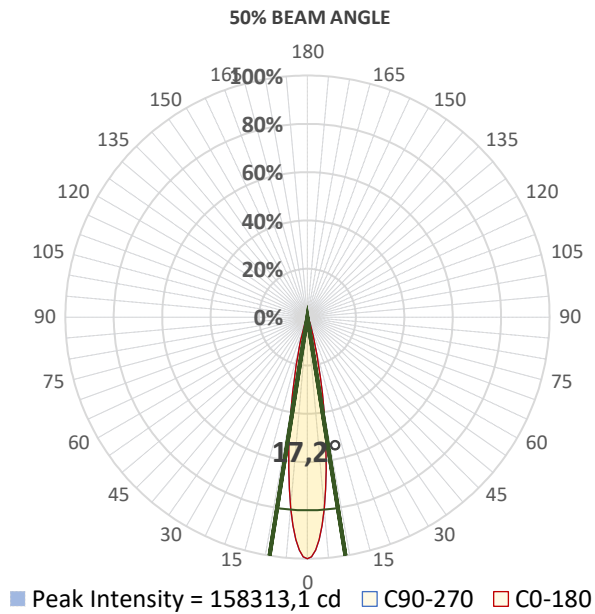
## Report Summary



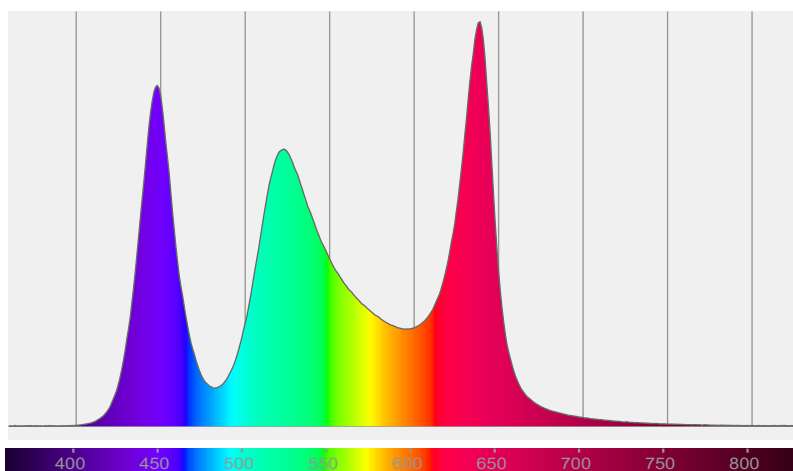
## Measurements

Photometrical Parameter	Optical Parameters	Electrical Parameters
Fixture Output: 18973 lm / 158313 cd	Beam Angle (50%): 17,2°	AC Supply: 226 V / 50 Hz
Fixture Efficiency: 36 lm/W	Field Angle (10%): 32°	Power: 523,2 W
Intensity @ 5m: 6333 lx	Cutoff Angle (2,5%): 45,7°	Current: 2,38 A
Color Temperature: 5827 K		Power Factor: 0,97
CRI: 75,8		
CRI R9 Value: -8,3		
CQS: 85,9		
TLCI: 65		
TM-30 Rf: 81,9		
TM-30 Rg: 114,6		

## Details



## Spectral Distribution



CIE 1931

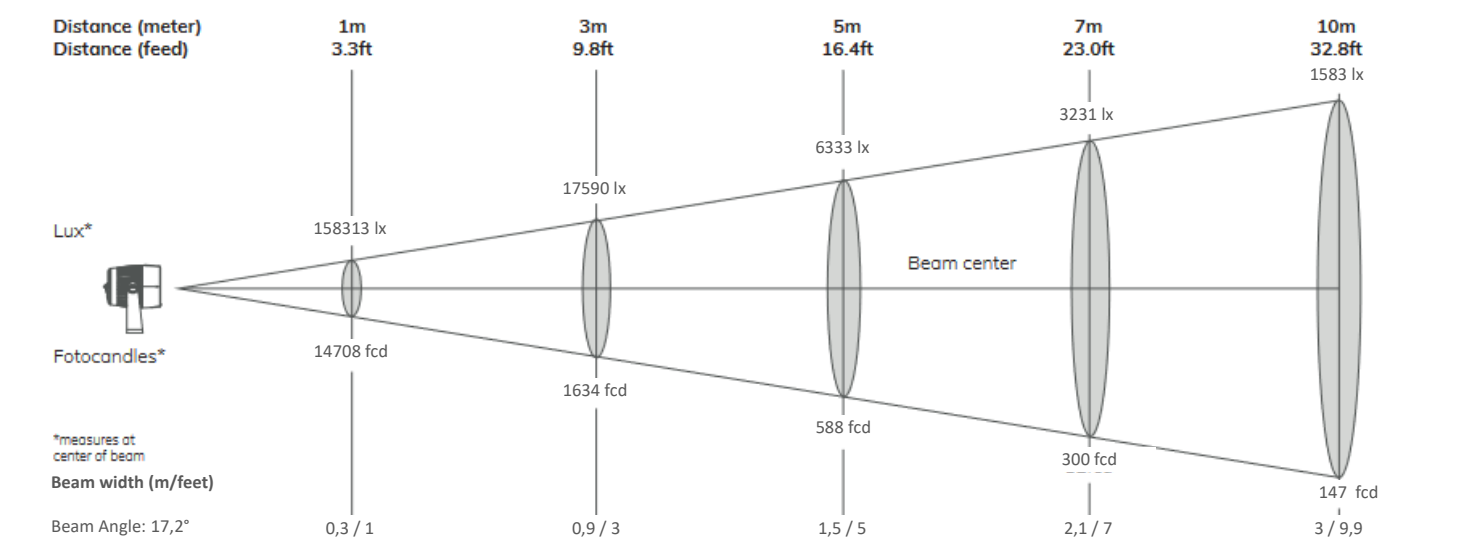
x: 0,325 y: 0,344

Light Quality

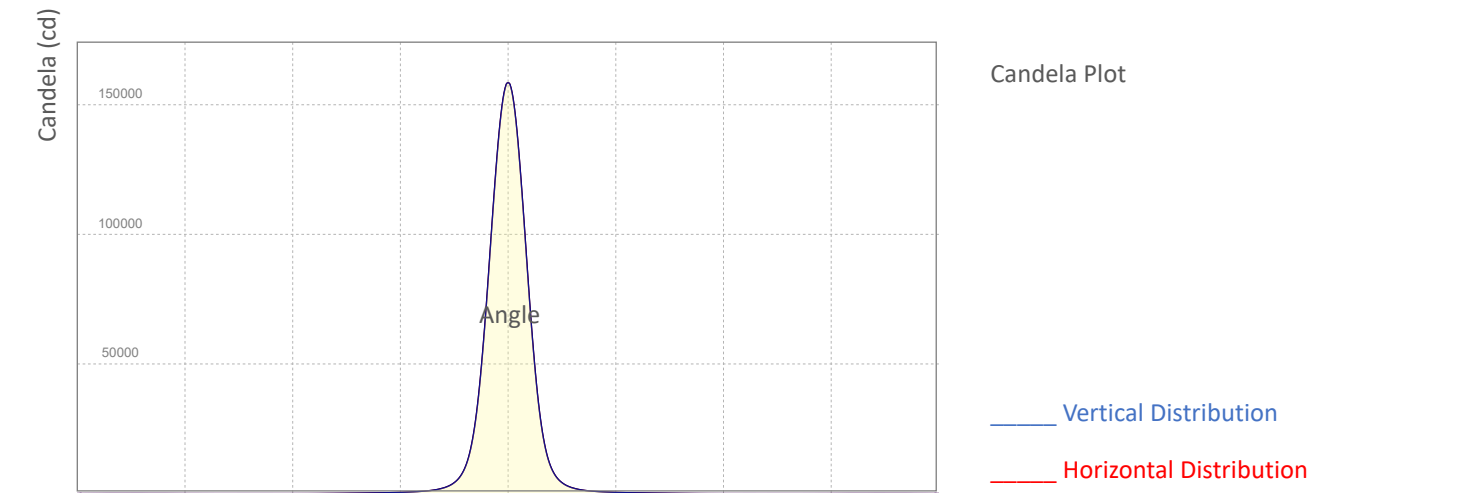
CRI: 75,8

Color Temperature

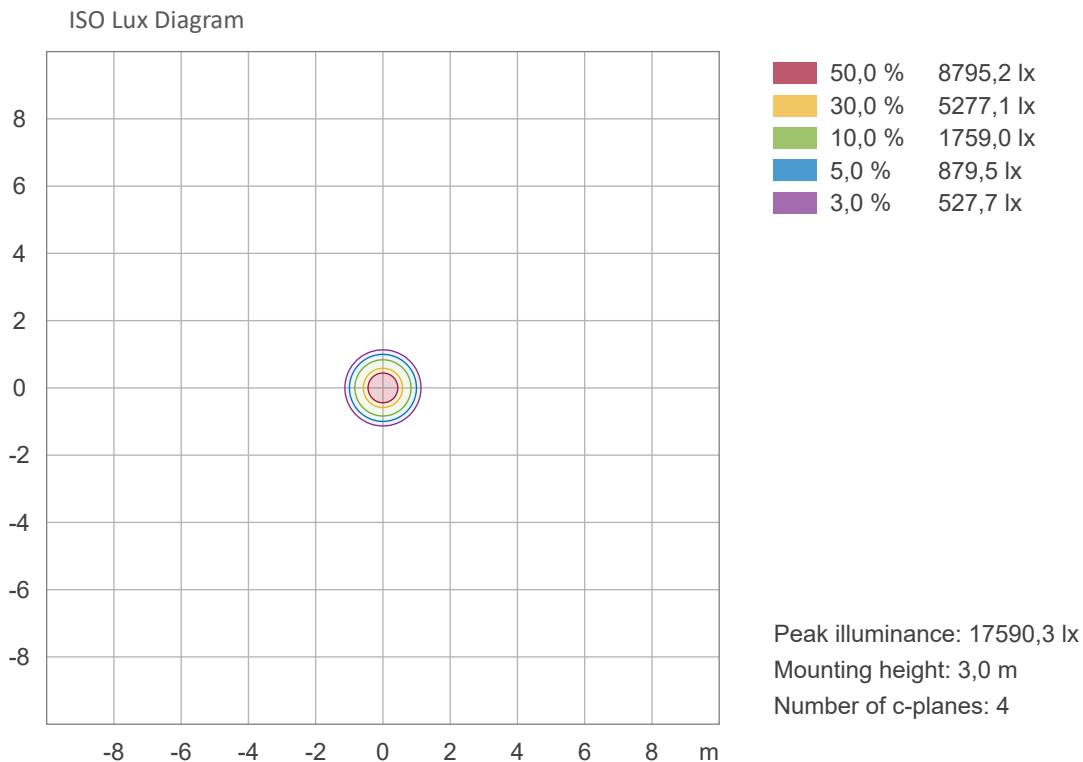
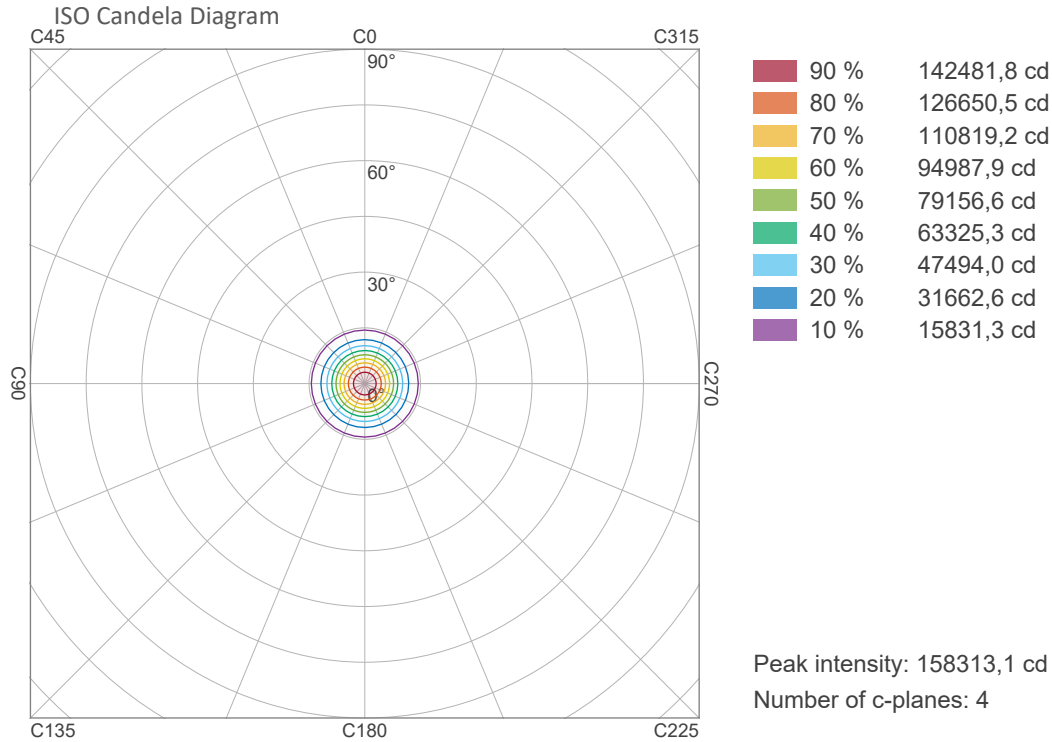
5827 K



Angle	Distance									
	1m / 3.3ft		3m / 9.8ft		5m / 16.4ft		7m / 23ft		10m / 32.8ft	
	Lux Center lx/fcd	Diameter m/feet	Lux Center lx/fcd	Diameter m/feet	Lux Center lx/fcd	Diameter m/feet	Lux Center lx/fcd	Diameter m/feet	Lux Center lx/fcd	Diameter m/feet
Beam Angle: 17,2°	158313/ 14708	0,3/1	17590/ 1634	0,9/3	6333/ 588	1,5/5	3231/ 300	2,1/7	1583/ 147	3/9,9

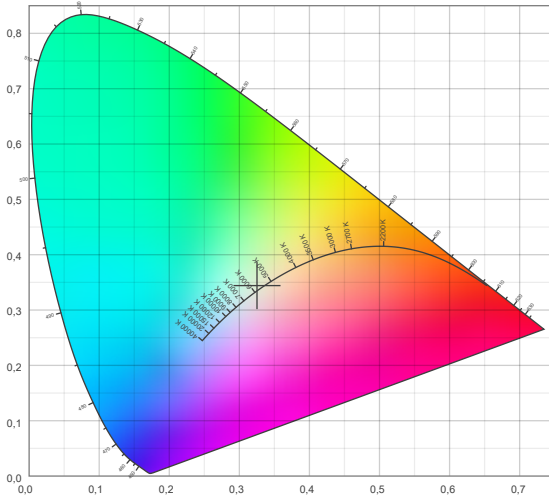


## ISO Diagrams

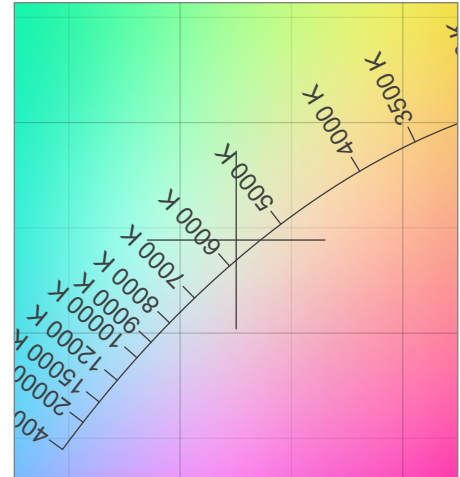


## Chromaticity

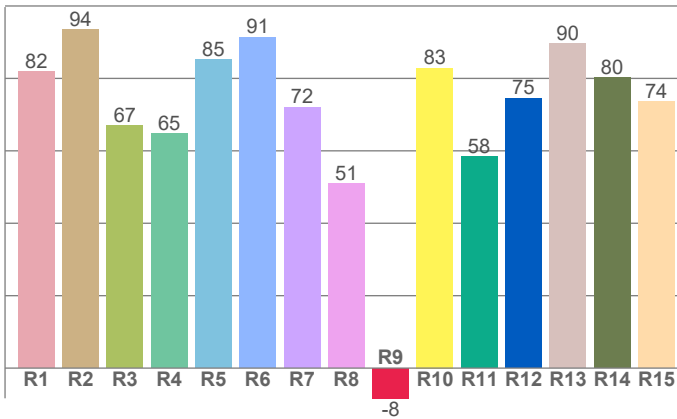
CIE 1931



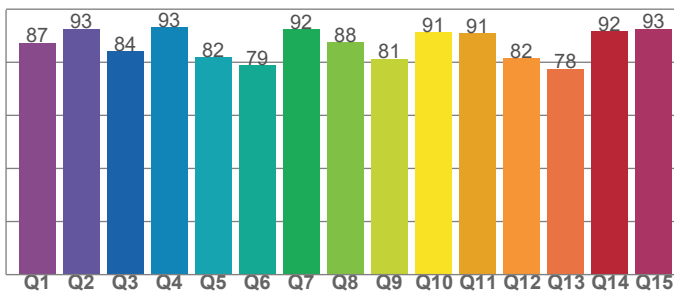
CIE 1931 - Zoom



CRI: 75,8 (R1-R8)



CQS: 85,9



Color Temperature	Color Coordinate CIE 1931	Color Coordinate CIE 1931
CCT	x	y
5827K	0,325	0,344

Color Deviation Black Body Curve	Color Coordinate CIE 1964	Color Coordinate CIE 1964
$\Delta uv$	u	v
0,0049	0,201	0,319

Color Rendering Index	Red Component	Color Quality Scale
CRI	CRI - R9	CQS
75,8	-8,3	85,9

Television Lighting Consistency Index	Color Fidelity	Color Gamut
TLCI	TM30 - Rf	TM30 - Rg
65	81,9	114,6

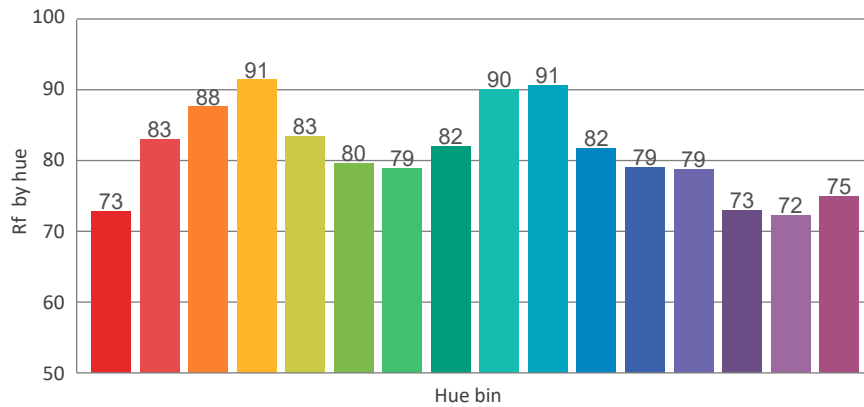
## TM30 Details

**Rf 81,9**

Fidelity Index Rf

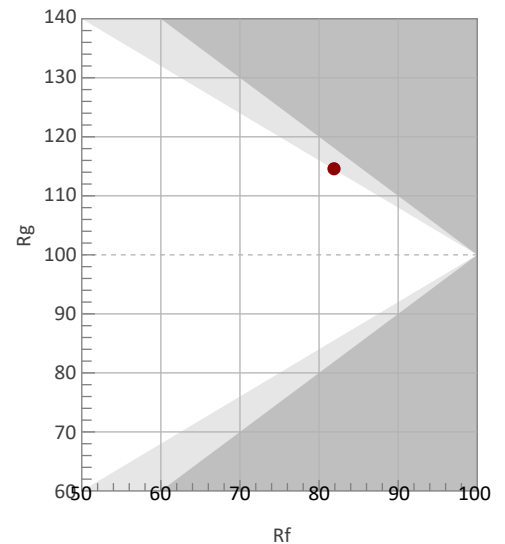
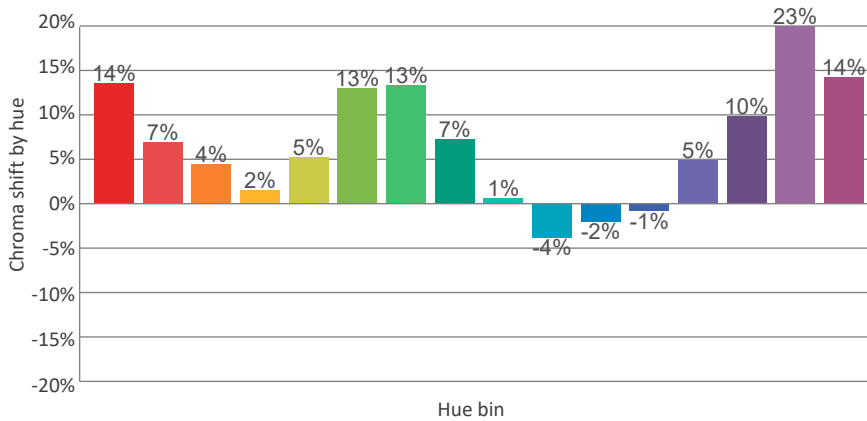
**Rg 114,6**

Gamut Index Rg

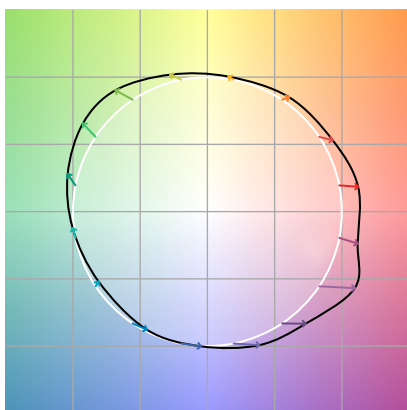


		Shifts (%)	
Hue Bin	Rf	Chroma	Hue
1		%	%
2		%	%
3		%	%
4		%	%
5		%	%
6		%	%
7		%	%
8		%	%
9		%	%
10		%	%
11		%	%
12		%	%
13		%	%
14		%	%
15		%	%
16		%	%

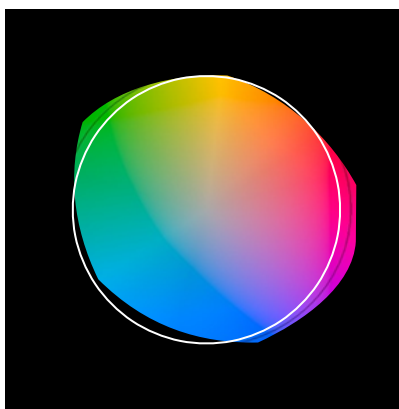
TM30\_BIN\_VALUES\_END)



Color Vector Graphics



Color Distortion Graphics



Color Evaluation Sample

